

Danbury Branch Dockyard Project



The Danbury Branch Dockyard Project will electrify the Danbury Branch and add tracks between Washington Street and Jennings Place in Norwalk, CT. This enables trains ending in South Norwalk to redirect service for the return trip to Grand Central Terminal. Rail improvements included in this project are:

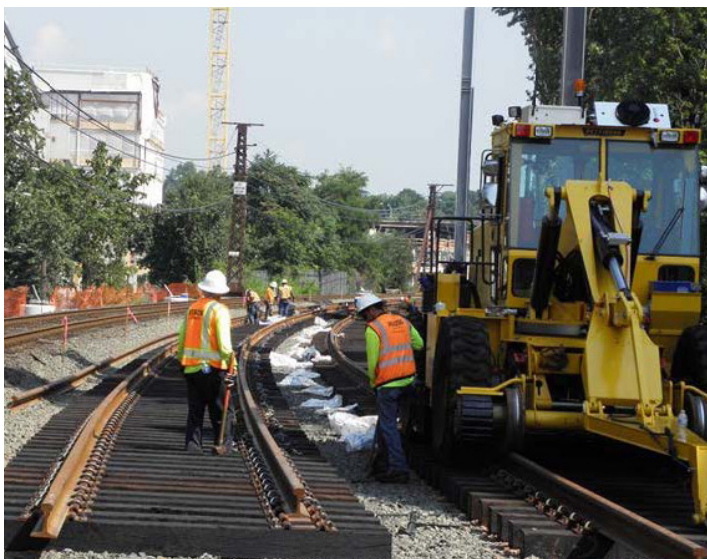
- Track replacement & realignment
- Two new tracks between Marshall Street and Science Road
- Ann Street Railroad Bridge superstructure replacement
- Communications and signal system upgrades
- New catenary structures

Work will occur during daytime hours when possible, with night and weekend hours as necessary to facilitate work requiring track access.

OCTOBER 2017
Construction Start

2.5 YEARS
Construction Duration

\$89 MILLION
Construction Cost



Construction Progress

- Overhead wires removed
- Replacement of tracks 2, 4 & 6
- Sub-ballast & ballast excavation & replacement
- Tree-trimming & clearing
- New catenary foundations (East & West)
- Science Road railroad crossing replacement

Upcoming Construction Activities

- New catenary structures
- Additional ballast installation
- Railroad drainage installation



www.WalkBridgeCT.com





Ann Street Railroad Bridge

As part of the Danbury Branch Dockyard Project, the superstructure of the rail bridge over Ann Street will be replaced with a new weathering steel deck and beams. Abutment wall improvements will include resetting the existing stone and new stained concrete caps. The proposed bridge will maintain the 19th century character of the existing bridge.

Phase I - Completed

- Track removal (East)
- Steel demolition & replacement (East)
- New track installation (East)
- Abutment wall demolition & reconstruction (East)

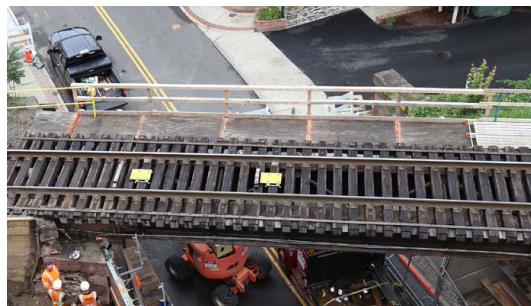


New Ann Street Bridge




Phase II - Late Fall 2018


- Track removal (West)
- Steel demolition & replacement (West)
- New track installation (West)
- Abutment wall demolition & reconstruction (West)




Contact Us

 **Visit us** at WalkBridgeCT.com to sign up for email announcements and notifications

 **Follow us** on social media:
[@WalkBridgeCT](https://www.facebook.com/WalkBridgeCT)

 **Email us** with questions or comments:
info@walkbridgect.com

 **Submit** a comment online at:
WalkBridgeCT.com/get_involved

 **Call** the program hotline:
1 (833) 462-9255



www.WalkBridgeCT.com

