

Walk Bridge Program

A 100-Year Solution to Improve Rail
Infrastructure in Norwalk, CT

June 20, 2019



Federal Transit
Administration

The Walk Bridge Program



Program Overview

\$511 MILLION

Walk Bridge Replacement

\$242 MILLION

CP243 Interlocking

\$89 MILLION

Danbury Dockyard

\$26 MILLION

East Ave. Bridge Replacement and Roadway Improvement Project

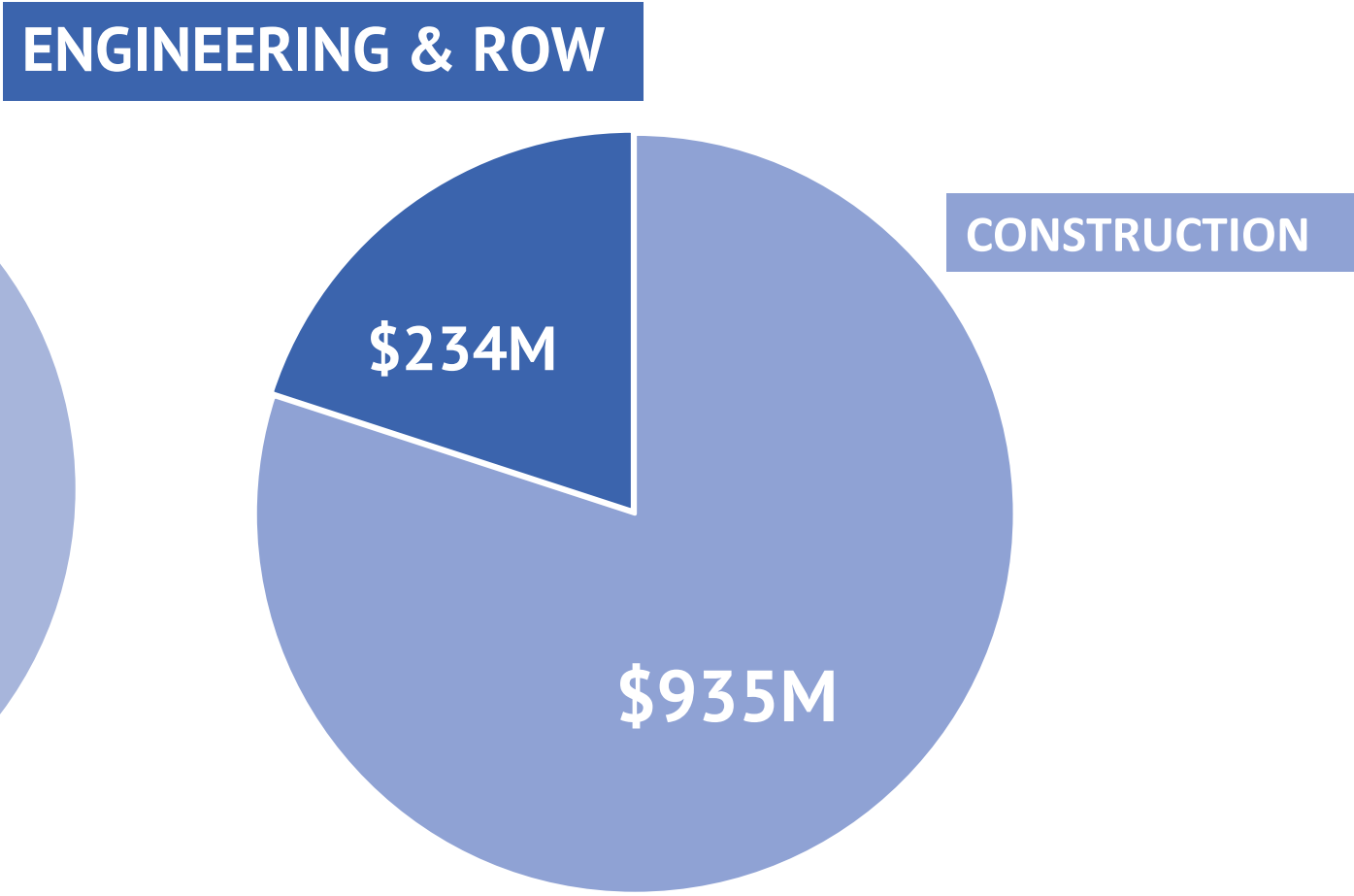
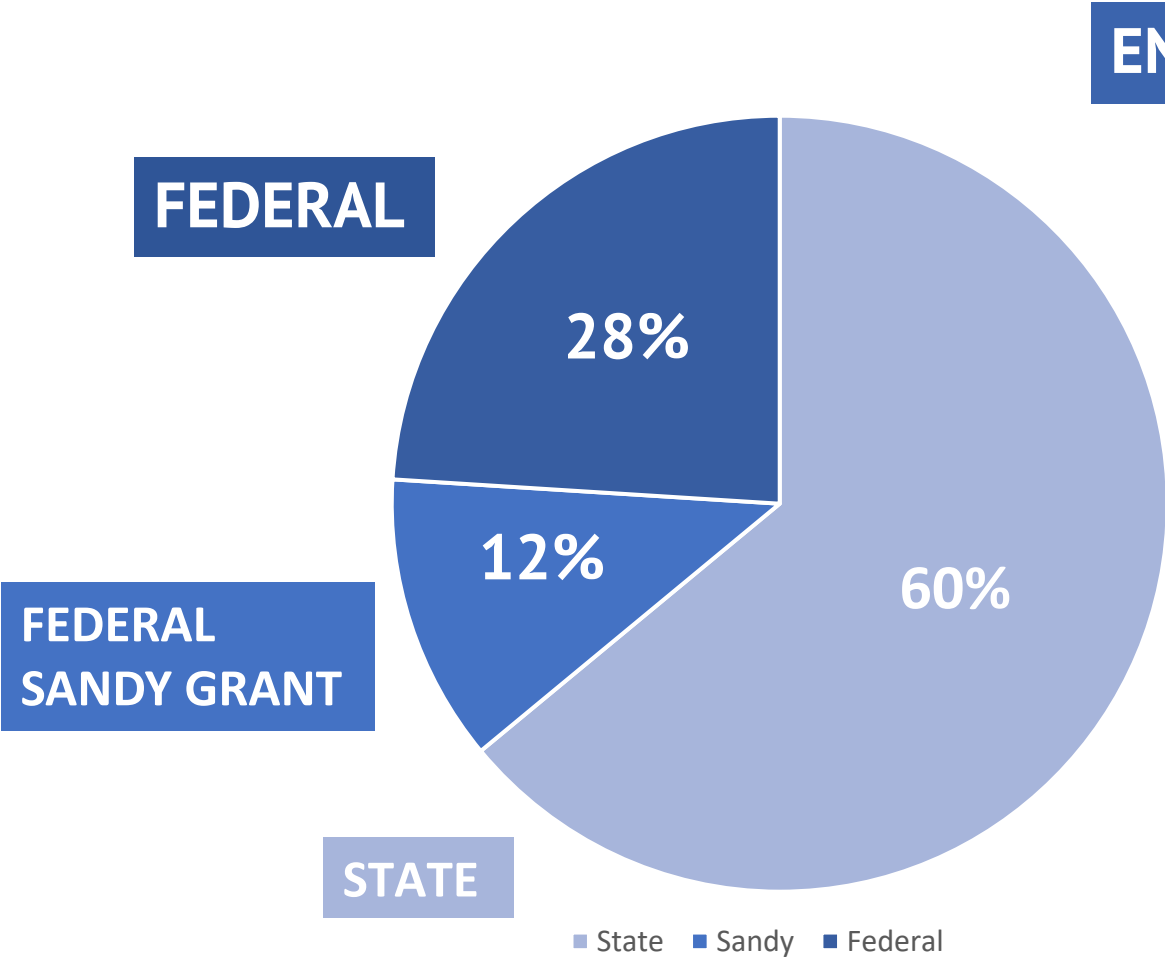
\$20 MILLION

Fort Point Street Roadway Realignment and Bridge Replacement

\$12 MILLION

Osborne Ave. Bridge Replacement

\$1.2 Billion Program



Purpose & Need



2011 – Failed 12 times/138 openings

2013 – Failed 16 times/271 openings

2014 – Failed twice within 2-week span

Emergency Declaration on July 8, 2014

Resiliency

Redundancy

Local/Regional Economy

Navigational Capacity

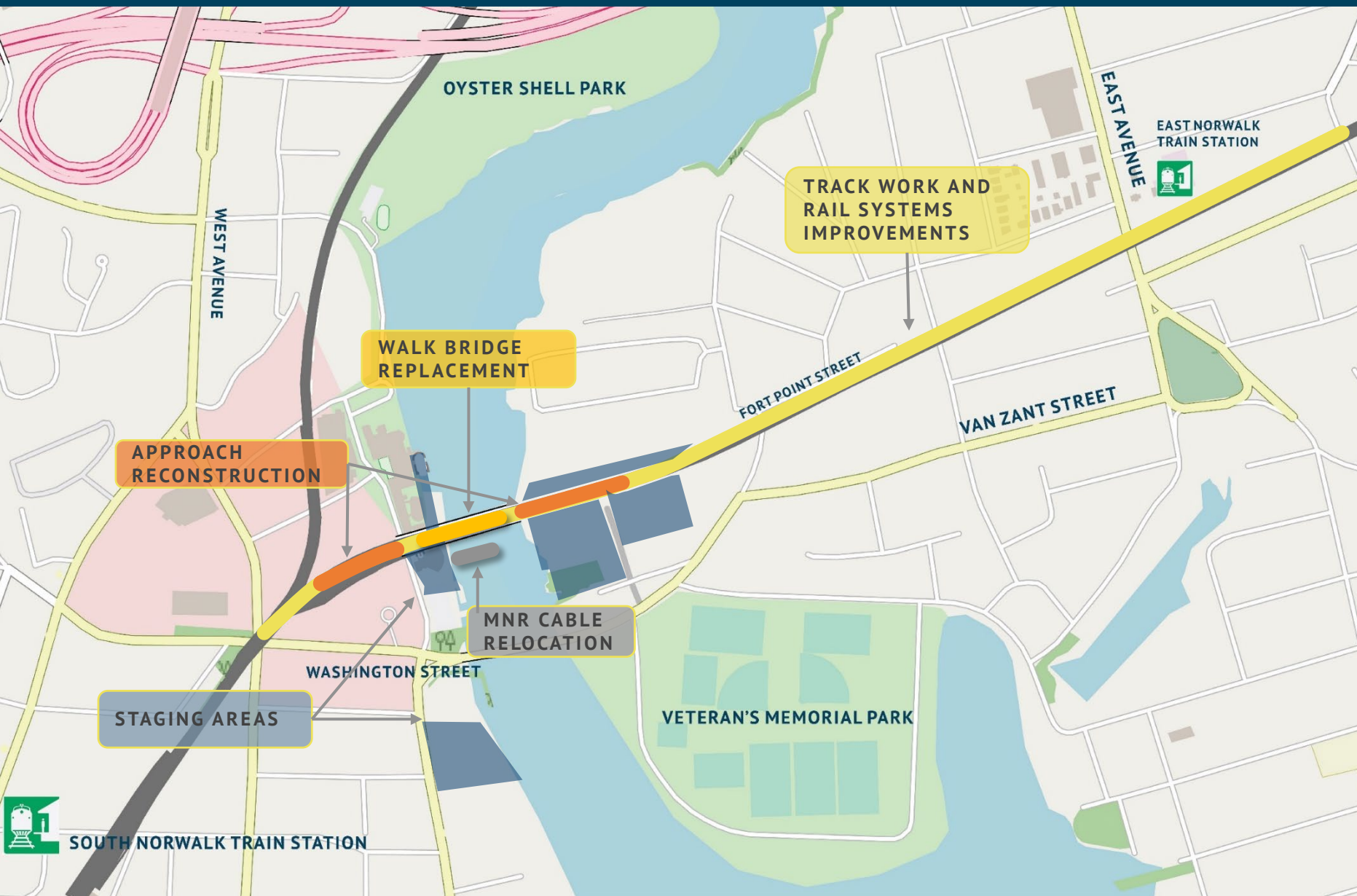
Dependability

Sustainability

Environment



The Walk Bridge Replacement Project



4-5 YEARS
Construction Duration

2020
Construction Start

240 FOOT SPAN
Vertical Lift Bridge

Design – Vertical Lift Bridge



Shortest Construction of Movable Options

Fewest Environmental Impacts

Minimizes Rail Service Impacts

Maintains Navigation

Improves Service Dependability

Withstands Extreme Weather Events

Two-Independent Movable Spans

Protects Up-river Development

Vertical Clearance

- Closed – 26 Feet
- Open – 60 Feet

Design – Vertical Lift Bridge



Span Length
240 Feet (Tower to Tower)

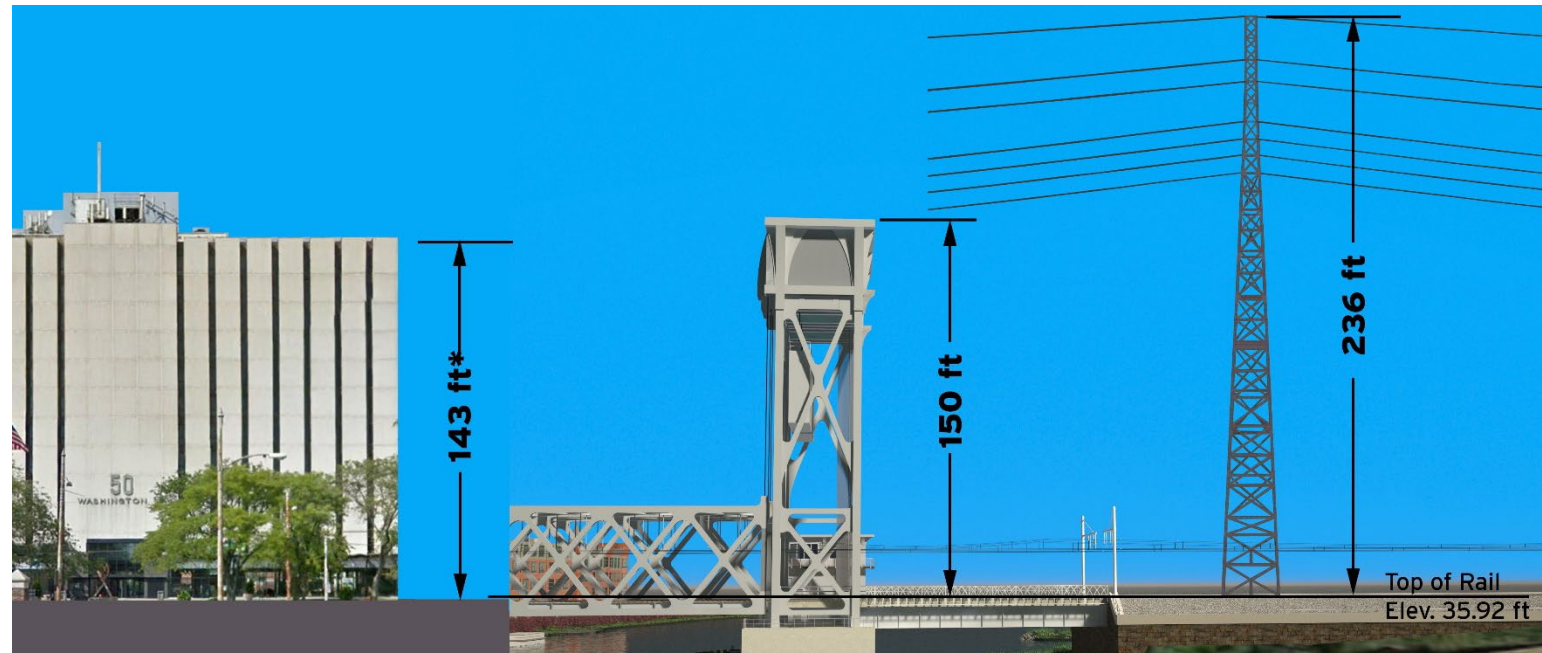
Tower Height
150 Feet

Vertical Clearance

- Closed – 26 Feet
- Open – 60 Feet

Horizontal Clearance

- Channel – 170 Feet



50 Washington Street

* Height based on 50 Washington Street Heliport (CT56) elevation: www.airnav.com/airport/CT56

Walk Bridge Lift Span Tower

Existing High Tower

CP243 Interlocking Project



3.5 YEARS
Construction Duration

OCTOBER 2017
Construction Start

3200 FOOT
Four-track Interlocking System

CP243 Interlocking Project Progress



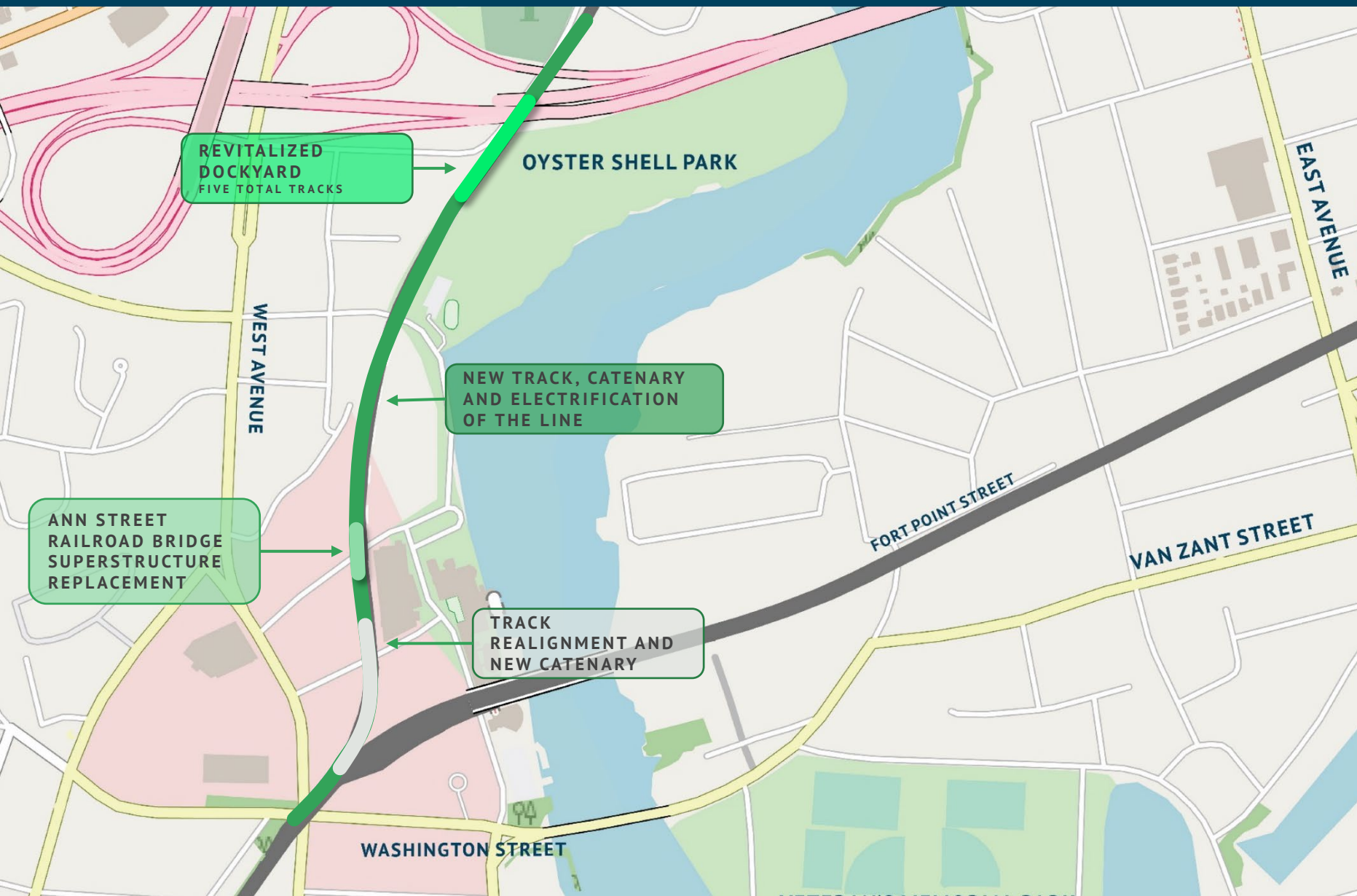
Shotcrete & Soil Nail Wall

Track 4 Removal & Reconstruction ➤

Excavation & Ongoing Drainage Improvements ➤



Danbury Branch Dockyard Project



2.5 YEARS
Construction Duration

OCTOBER 2017
Construction Start

Danbury Branch Project Milestones



- ◀ Ann Street Bridge Replacement
 - Phase I: Eastern Tracks
 - Phase II: Western Tracks

New Tracks & Catenary Structures Erected on the Danbury Branch ▼



Fort Point Street

Bridge Replacement and Roadway Realignment



3 YEARS
Construction Duration

1.5 YEARS INTO
WALK BRIDGE
CONSTRUCTION
Construction Start

Osborne Avenue

Railroad Bridge Replacement



3 YEARS
Construction Duration

1.5 YEARS INTO WALK BRIDGE CONSTRUCTION
Construction Start

East Avenue

Bridge Replacement and Roadway Improvement Project



3 YEARS
Construction Duration

1.5 YEARS INTO WALK BRIDGE CONSTRUCTION
Construction Start

Preliminary Detour Routes



- **North Water St.** for Walk Bridge construction
- **Osborne Ave.** for bridge construction
- **East Ave.** for roadway and bridge construction
- **Fort Point St.** for bridge construction (*only after East Ave. is lowered*)
- Roadways will not be closed at the same time

- Traffic signals during construction
- East Ave. and Fort Point St. detour route
- North Water St. detour route
- Osborne Ave. detour route
- Bridge replacement

Community Benefits



EDUCATIONAL EXHIBITS

REVITALIZED WHARF WETLAND PRESERVATION

BIKE/PEDESTRIAN TRAILS

SIGNATURE BRIDGE

ECONOMIC DEVELOPMENT

BETTER NORWALK

STORM RESILIENCE

NEW 4D THEATER

REDUCED CONSTRUCTION DURATION

REPLACING EXISTING, DETERIORATING BRIDGES UNCOVERING HISTORY

HISTORIC RESOURCE PRESERVATION

INFRASTRUCTURE RELIABILITY

ARCHAEOLOGICAL EXCAVATION

TWO INDEPENDENT MOVABLE SPANS

NEW CITY DOCK

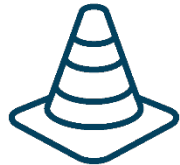
INTERPRETIVE PANELS

COMMUNITY ART EXHIBITS

Community Outreach



Welcome Center



Construction News



Community Events



Public Meetings



Digital Outreach



Walk Bridge Replacement Project

The Newark River Railroad Bridge (R.R. Bridge) will be built in 2018 and the adjacent to the existing bridge will be replaced with a new bridge. The bridge replacement will be a multi-phased project and will require the use of temporary construction equipment. The bridge replacement will be a multi-phased project and will require the use of temporary construction equipment. The bridge replacement will be a multi-phased project and will require the use of temporary construction equipment.

As part of the project, the bridge will be replaced with a new bridge. The bridge replacement will be a multi-phased project and will require the use of temporary construction equipment. The bridge replacement will be a multi-phased project and will require the use of temporary construction equipment.

Walk Bridge Program CONSTRUCTION NEWS

Friday, February 22 - Monday, March 4, 2019

Railroad Activity

Track work on the Hudson River between Newark Street and Kennedy Place

- Monday, February 22 - Friday, March 1 from 6:30 AM - 4:30 PM
- No impacts to local roads or pedestrian traffic are anticipated
- No impacts to rail service are anticipated
- No impacts to rail service are anticipated

Local Road Activity

Signal work on the Hudson River between Newark Street and Kennedy Place

- Monday, February 22 - Friday, March 1 from 6:30 AM - 4:30 PM
- No impacts to local roads or pedestrian traffic are anticipated
- No impacts to rail service are anticipated
- No impacts to rail service are anticipated

Local Road Activity

Signal work on the Hudson River between Newark Street and Kennedy Place

- Monday, February 22 - Friday, March 1 from 6:30 AM - 4:30 PM
- No impacts to local roads or pedestrian traffic are anticipated
- No impacts to rail service are anticipated
- No impacts to rail service are anticipated



Inclusivity



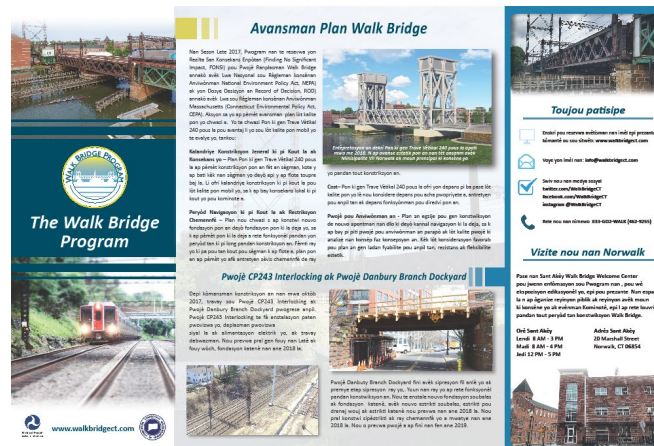
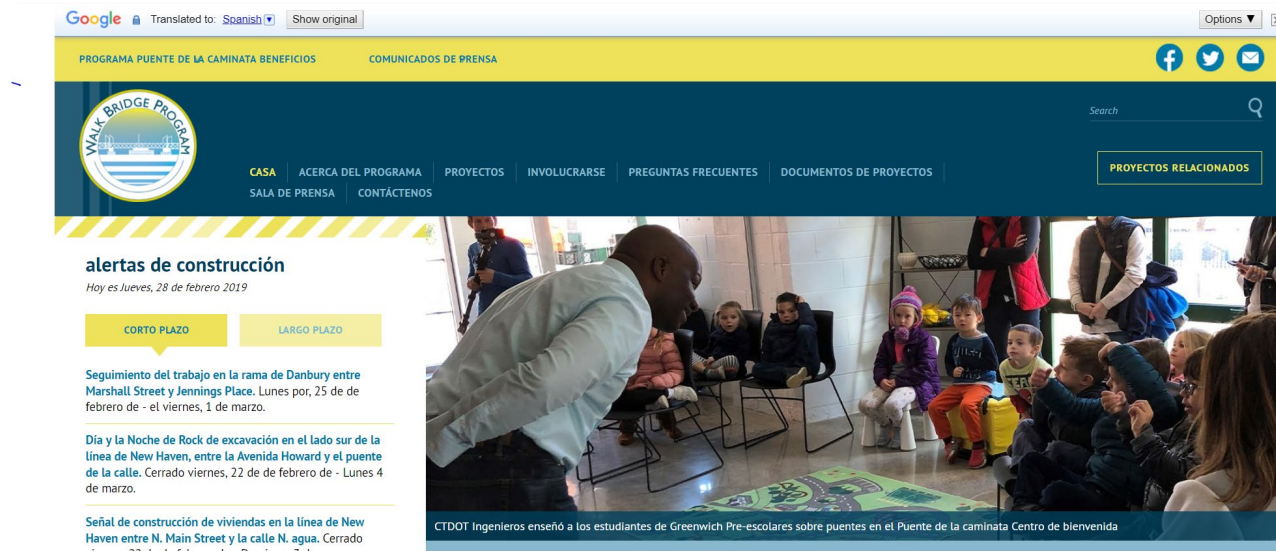
Document Translations

Targeted Media Placements

Fully Accessible Digital Materials

ADA Accessibility

Interpreter services/ special assistance available



Education & Culture



Education Program

VR Model

Archeological Dig

Arts Program



Business Coordination



Let's Talk the Walk

Businesses, we want to hear from you!

BUSINESS COORDINATION SURVEY

Help us minimize construction disruptions to your business by providing some insights about your regular business operations.

Please spend five minutes filling out our survey by scanning the code or following the link below.

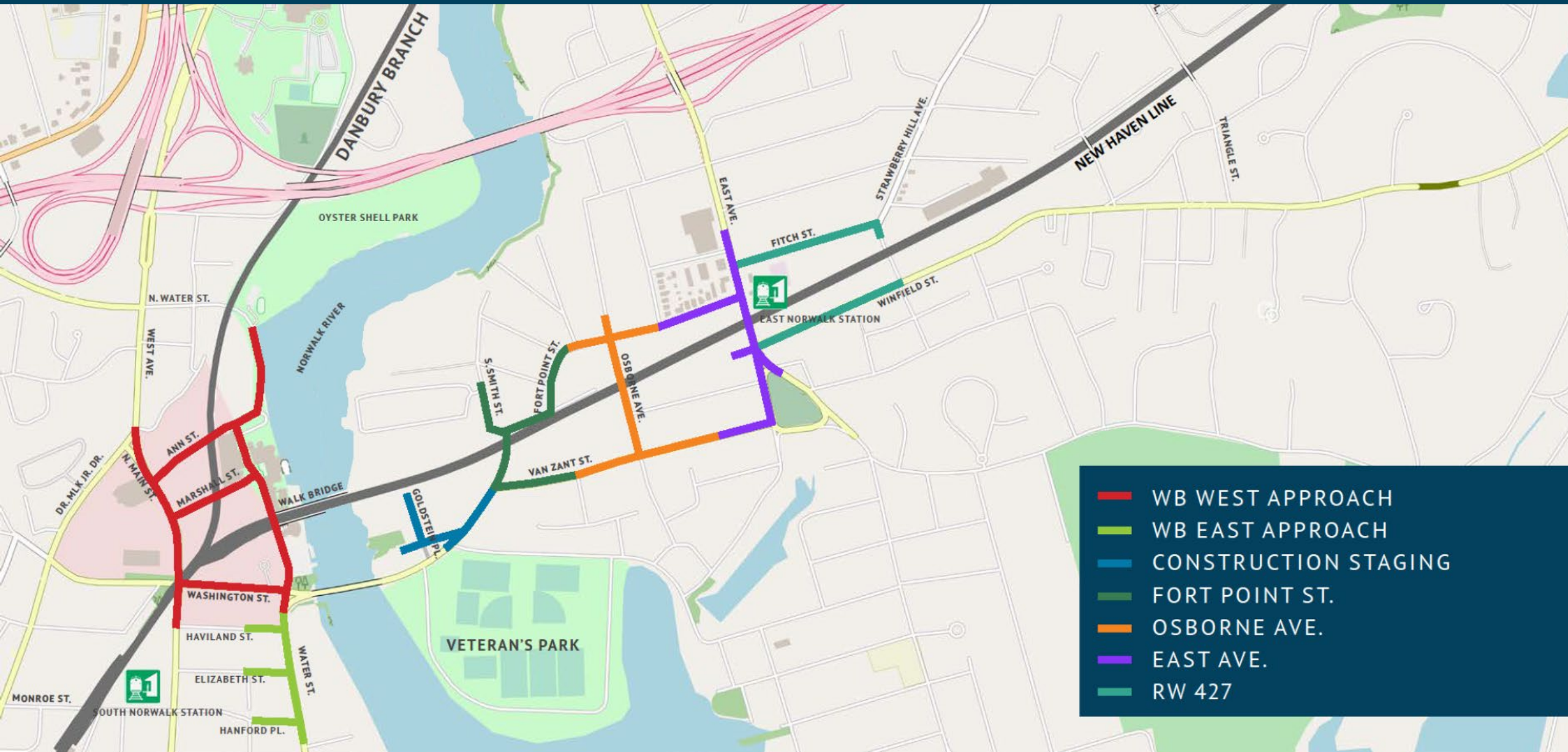


www.surveymonkey.com/r/WalkBridgeSurvey

More information available at:
www.WalkBridgeCT.com



Business Coordination



- WB WEST APPROACH
- WB EAST APPROACH
- CONSTRUCTION STAGING
- FORT POINT ST.
- OSBORNE AVE.
- EAST AVE.
- RW 427

Stay Involved



www.walkbridgect.com



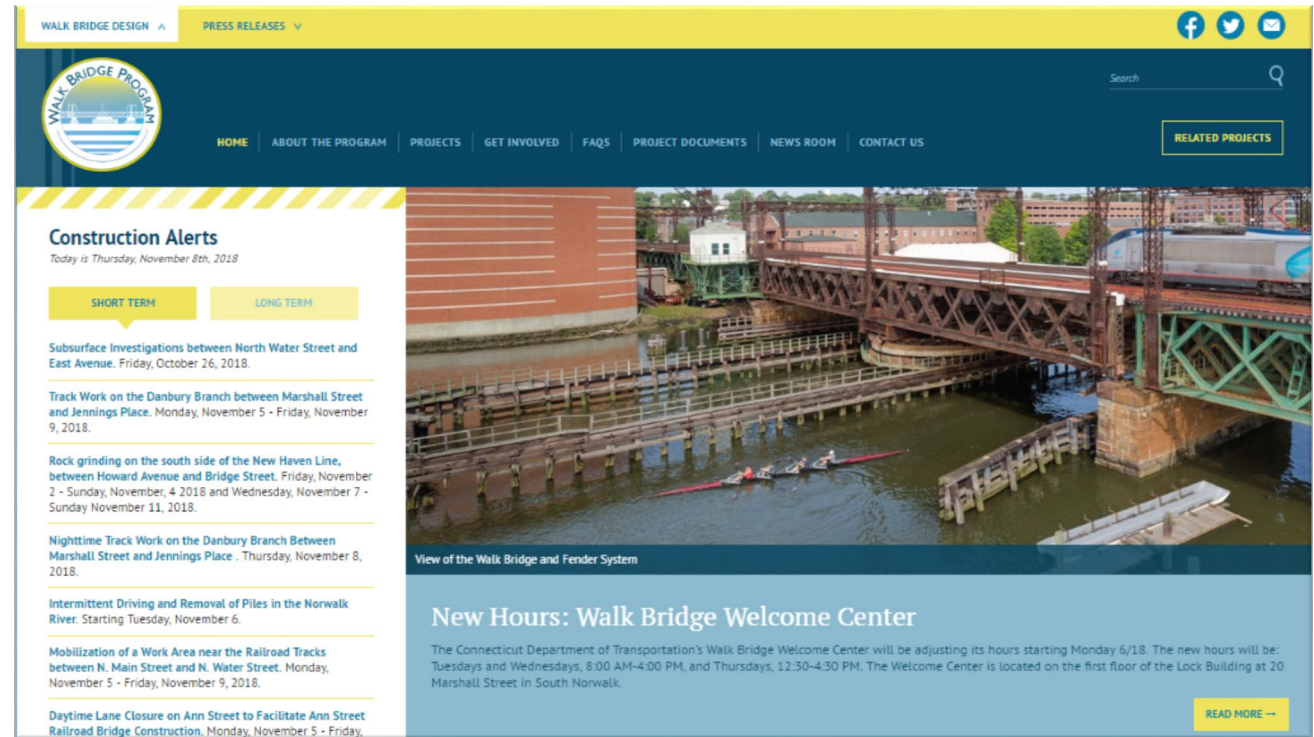
info@walkbridgect.com



833-GO2-WALK



[@walkbridgect](https://www.instagram.com/walkbridgect)



Open Discussion

