

Walk Bridge Project

Norwalk Harbor Management
Commission

Permit Pre-application Coordination

January 23, 2019



www.walkbridgect.com



Meeting Agenda

1. Introductions & Meeting Purpose
2. Project Overview and Update
3. Overview of Permit Plates and Construction Activities
4. Permit Plate Review
5. Next Steps
6. Questions & Comments





Project Overview



240' Vertical Lift Span

- Shortest construction schedule
- Lowest risk during construction
- Shortest period of navigation restrictions
- Fewest foundations in water
- Improved alignment with Stroffolino Bridge

Anticipated Duration: 4-5 years

www.walkbridgect.com



Anticipated Permits

- NOAA/NMFS Section 7 Informal Consultation
- NOAA/NMFS Essential Fish Habitat Assessment
- U.S. Army Corps of Engineers Section 408 Permit
- U.S. Army Corps of Engineers Section 10/Section 404 Permit
- CTDEEP Structures, Dredge and Fill Permit, Tidal Wetlands Permit, Section 401 Water Quality Certification, Coastal Consistency Review (CZM)
- CTDEEP Flood Management Certification
- CTDEEP Construction Stormwater General Permit
- U.S. Coast Guard Section 9 Bridge Permit
- General Permit for Contaminated Soil/Sediment Management
- FAA Notice of Proposed Construction

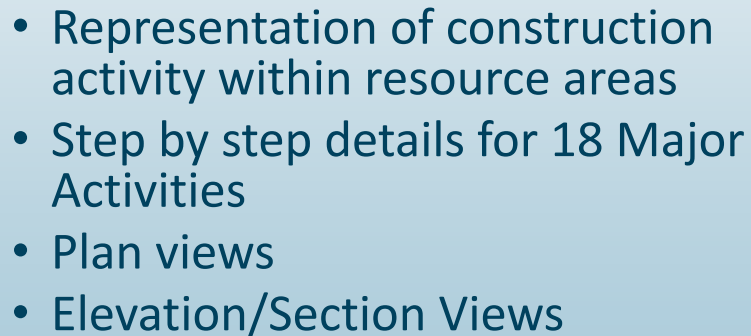


Goals and Expectations

- Discuss the Walk Bridge construction activities and methodologies
- Develop an awareness of protective measures and timelines for construction activities
- Provide Commission with a full understanding of construction activities and protective measures in support of permit filings



- Existing & Proposed Conditions
- Temporary Conditions
- Tidal Wetland Mitigation



Construction Activity Overview



NUMBER	CONSTRUCTION ACTIVITY
1	IMAX REMOVAL
2	DUCT BANK INSTALLATION
3	VESSEL DOCK RELOCATION
4	MARINE STAGING YARD
5	NORTHWEST TRESTLE
6	SOUTHWEST TRESTLE
7	NORTHEAST TRESTLE
8	SOUTHEAST TRESTLE
9	PIER 2
10	PIER 3
11	SUBMARINE CABLE INSTALLATION
12	SUBMARINE CABLE REMOVAL
13	SWING SPAN REMOVAL
14	EXISTING PIER REMOVAL
15	FENDER INSTALLATION
16	WETLAND MITIGATION
17	DREDGING
18	LIFT SPAN INSTALLATION

www.walkbridgect.com



Construction Activity Overview



NUMBER	CONSTRUCTION ACTIVITY
1	IMAX REMOVAL
2	DUCT BANK INSTALLATION
3	VESSEL DOCK RELOCATION
4	MARINE STAGING YARD
5	NORTHWEST TRESTLE
6	SOUTHWEST TRESTLE
7	NORTHEAST TRESTLE
8	SOUTHEAST TRESTLE
9	PIER 2
10	PIER 3
11	SUBMARINE CABLE INSTALLATION
12	SUBMARINE CABLE REMOVAL
13	SWING SPAN REMOVAL
14	EXISTING PIER REMOVAL
15	FENDER INSTALLATION
16	WETLAND MITIGATION
17	DREDGING
18	LIFT SPAN INSTALLATION

www.walkbridgect.com

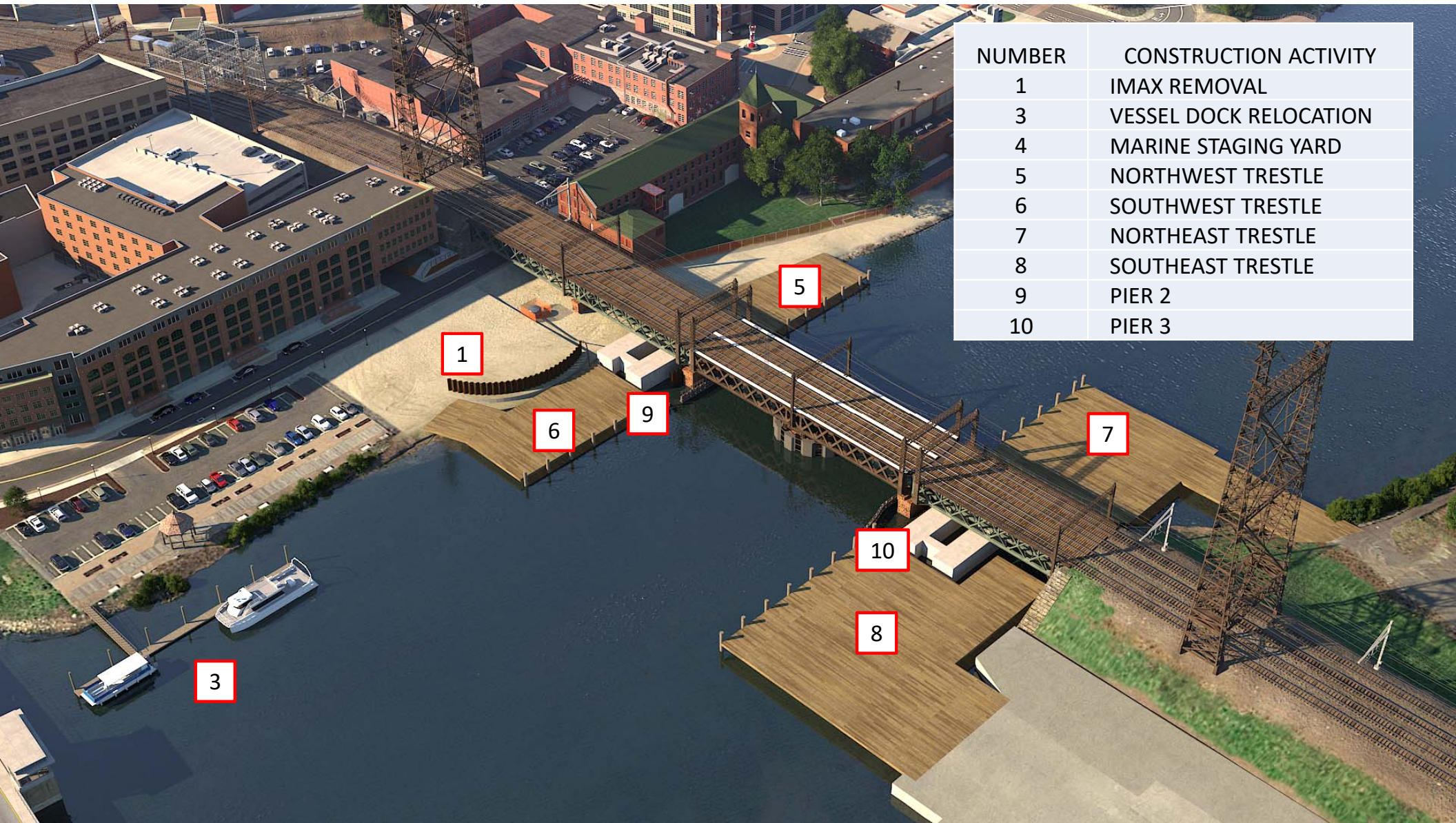


Vertical Lift Span Staged Construction



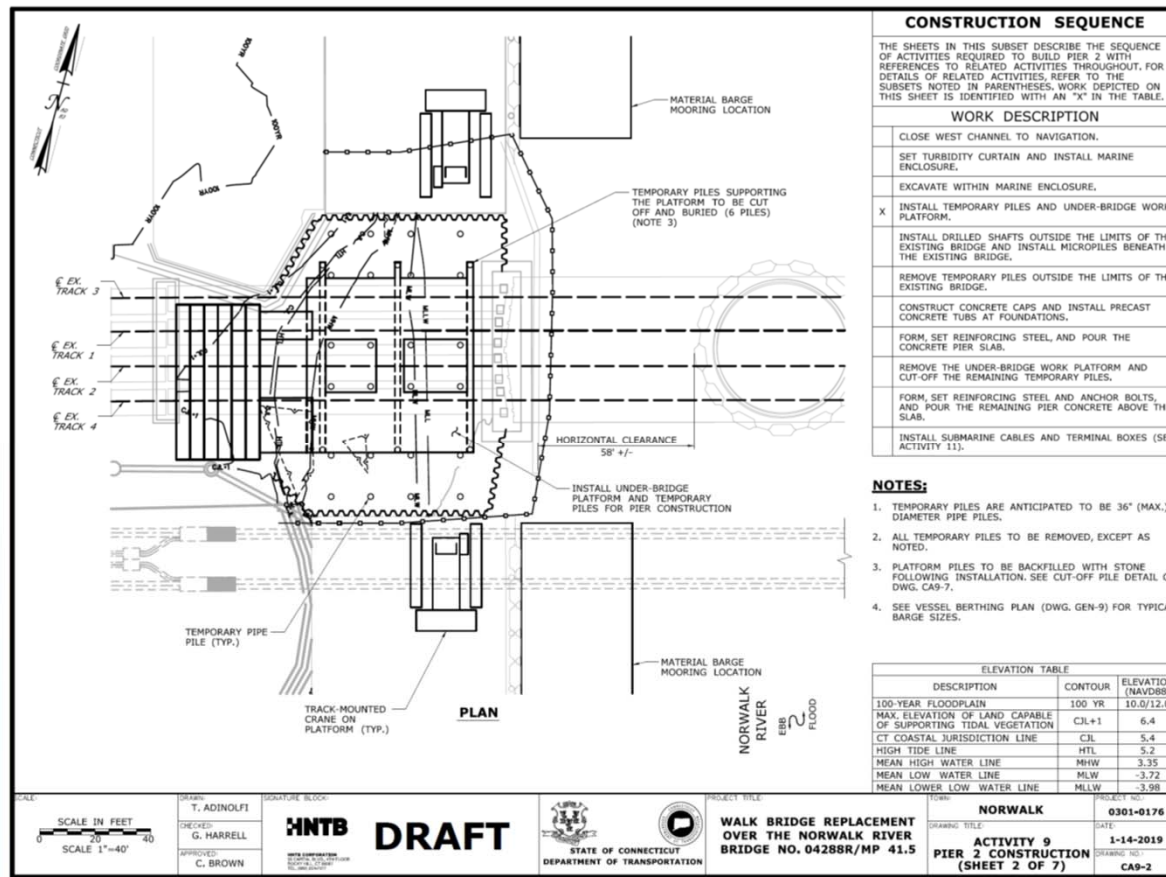
- Temporary Structures
- Lift Span Piers
- Span Removals
- Span Installation
- Pier Removals
- Submarine cables
- Dredging





NUMBER	CONSTRUCTION ACTIVITY
1	IMAX REMOVAL
3	VESSEL DOCK RELOCATION
4	MARINE STAGING YARD
5	NORTHWEST TRESTLE
6	SOUTHWEST TRESTLE
7	NORTHEAST TRESTLE
8	SOUTHEAST TRESTLE
9	PIER 2
10	PIER 3

Construction Activity “Plan View” Information



1. General Orientation
2. Jurisdictional lines
3. Elevation table
4. Sequence table
5. Construction Equipment
6. Protective measures

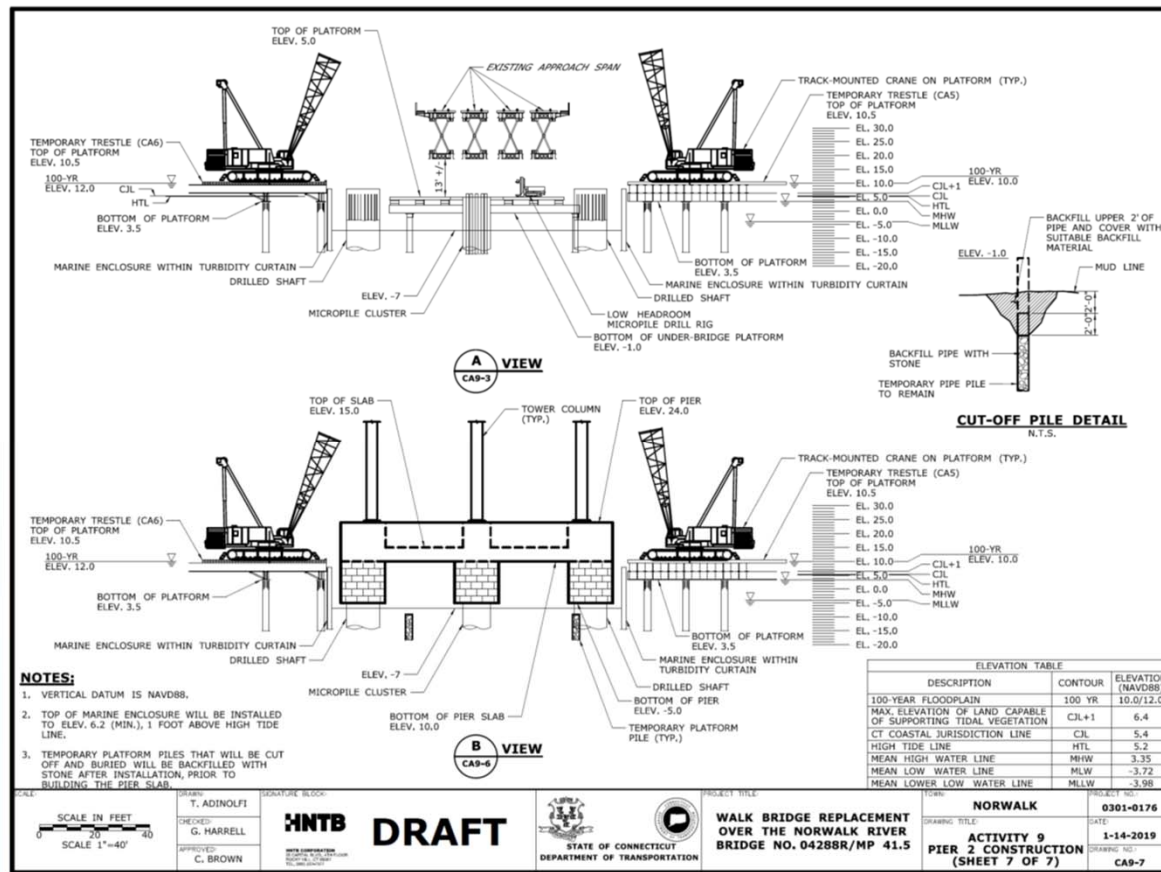


Jurisdictional Lines

Designation	Definition/Purpose
100-year floodplain	Defined as areas subject to inundation by the 1-percent-annual-chance flood event.
CJL+1	State defined areas capable of supporting tidal wetland vegetation.
CJL	State coastal jurisdiction boundary elevation. Defined for each municipality based on predicted tides.
HTL	Federal jurisdictional elevation for impacts to Waters of the US (Section 404).
MHW	Federal jurisdictional elevation for to Navigable Waters of the US (Section 10).
MLW	Lower elevation boundary for intertidal waters. Used to define to lower bounds of the intertidal zone.
MLLW	Reference elevation (datum elevation pt. 0) for Federal navigation projects.



Construction Activity “Section View” Information



1. Reference Elevations and jurisdictional lines
2. Temporary and Permanent structures
3. Equipment





Temporary Trestle Construction Activity



www.walkbridgect.com





Lift Span Pier Construction Activity



www.walkbridgect.com



Summary of In-water Protective Measures

- Turbidity Curtains
- Turbidity Monitoring
- Time of Year Restrictions
 - Dredging will occur between Dec. 1 – Jan. 31
 - No unconfined in-water silt producing activities from Feb. 1 – Sept. 30
- Use of soft starts at the beginning of each shift from Mar. 15 to Oct. 31
- Maintain one navigation channel, except for limited closures
- All temporary construction access restored to pre-construction conditions



Next Steps

- Submit Permit Plates in groups to Commission
- Commission Meetings – to discuss construction methodologies, activities, and protective measures and other topics
- Full understanding of construction activities and mitigation measures
- Permit Filing – Spring 2019





Questions & Comments



www.walkbridgect.com





www.walkbridgect.com

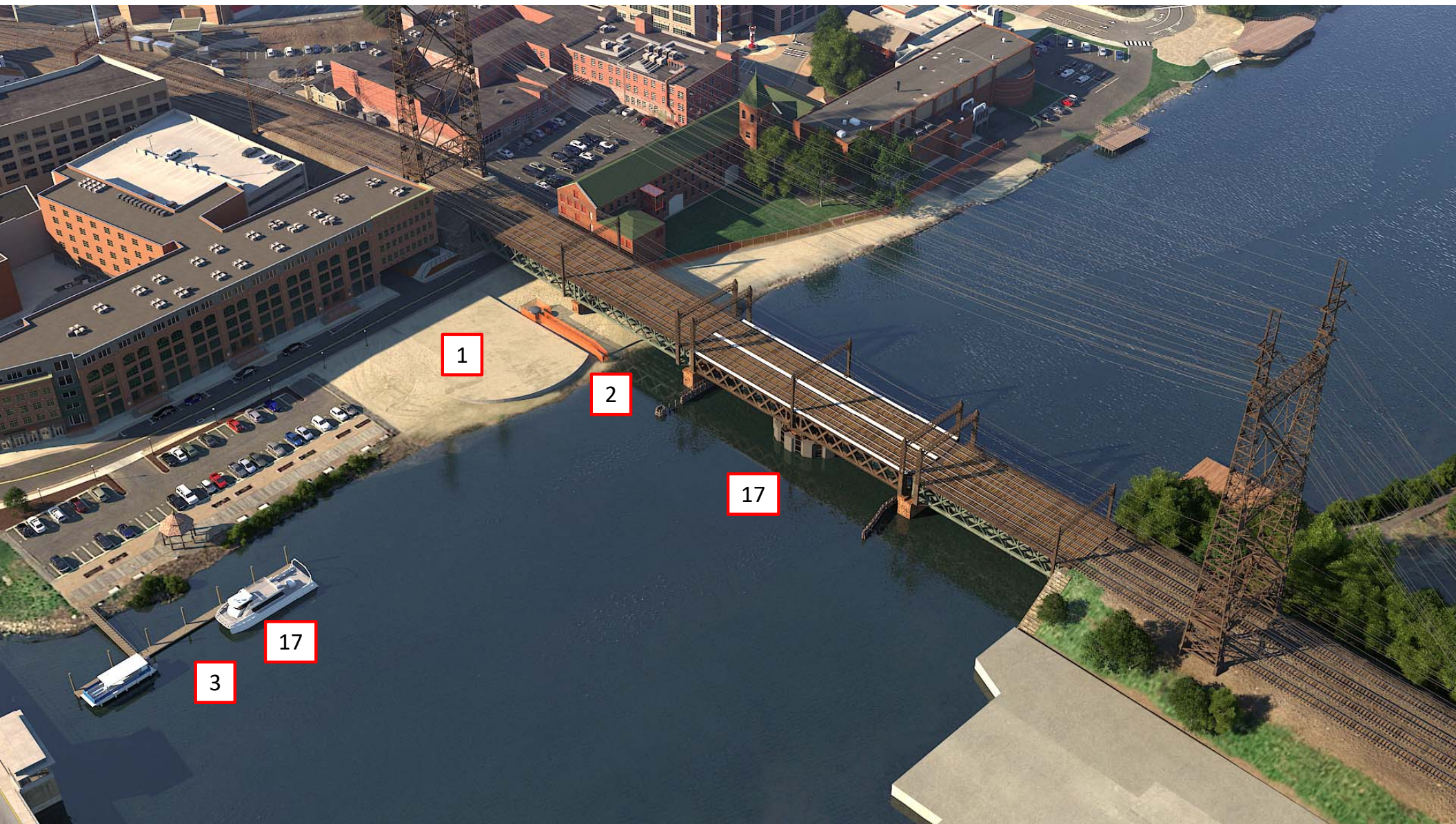


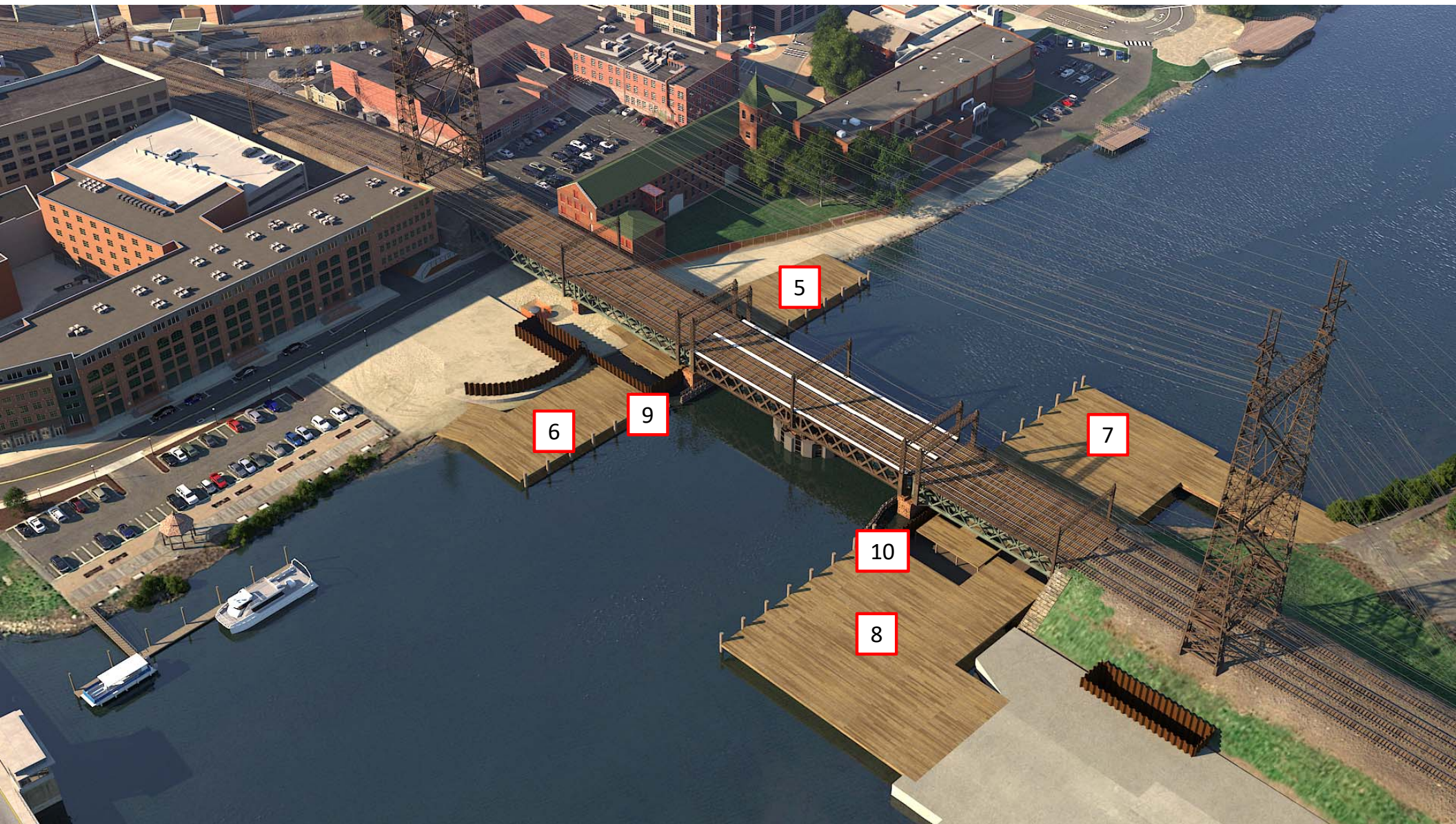


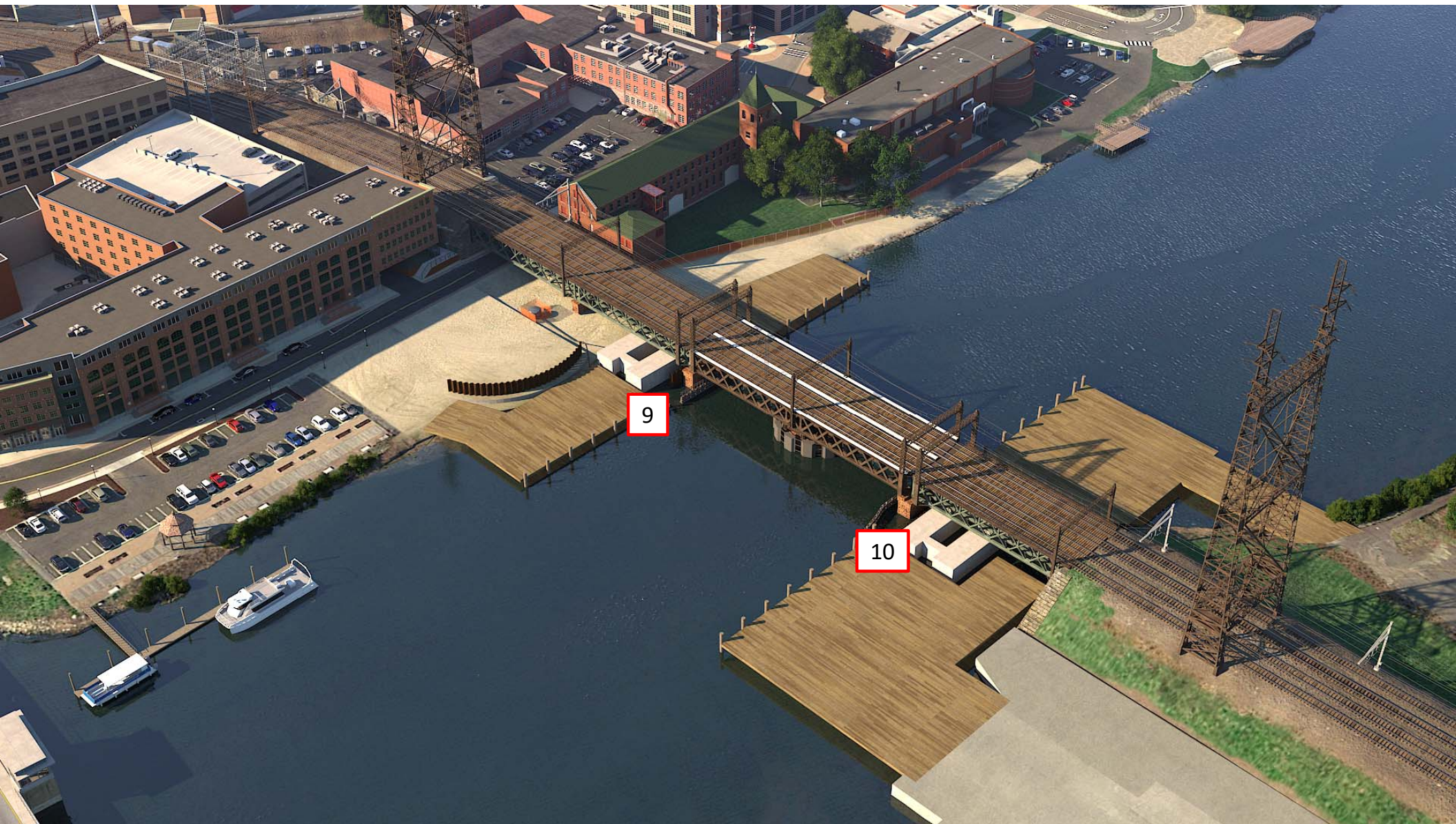
www.walkbridgect.com











9

10

