

Walk Bridge Project

Norwalk Shellfish Commission

November 1, 2018



www.walkbridgect.com



Meeting Agenda

1. Welcome & Introductions
2. Project Update
3. Project Commitments
4. Mitigation Measures
5. Next Steps
6. Questions & Comments

John Hanifin, CTDOT

Christian Brown, HNTB

Lauren DiGiovanni, HNTB

Chris Samorajczyk, CTDOT

Chris Samorajczyk, CTDOT

Chris Samorajczyk, CTDOT

John Hanifin, CTDOT

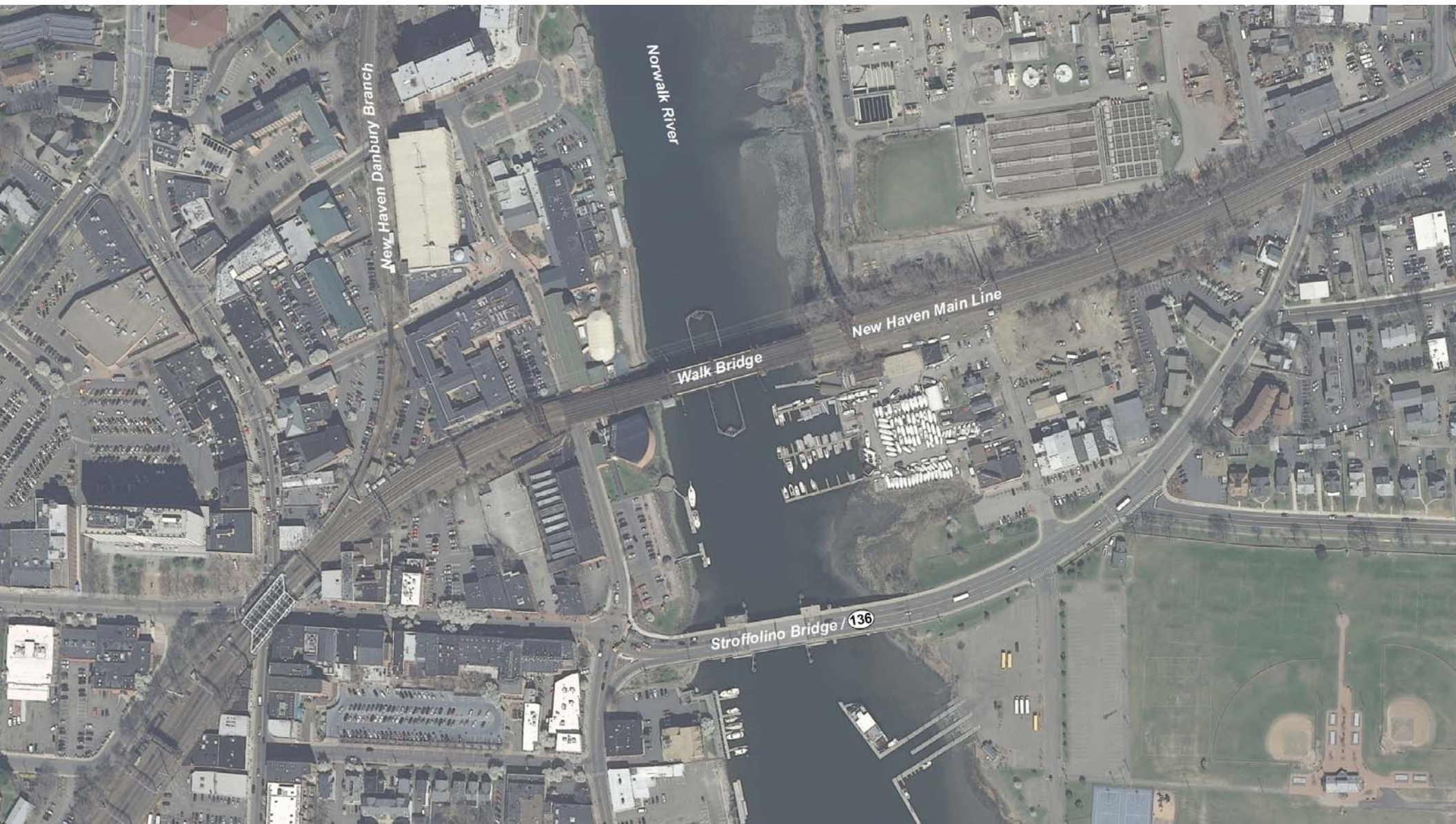


Program Overview



www.walkbridgect.com





Project Overview



240' Vertical Lift Span

- Shortest construction schedule
- Lowest risk during construction
- Shortest period of navigation restrictions
- Fewest foundations in water
- Improved alignment with Stroffolino Bridge

Anticipated Duration: 4-5 years

www.walkbridgect.com



Construction Activity Overview

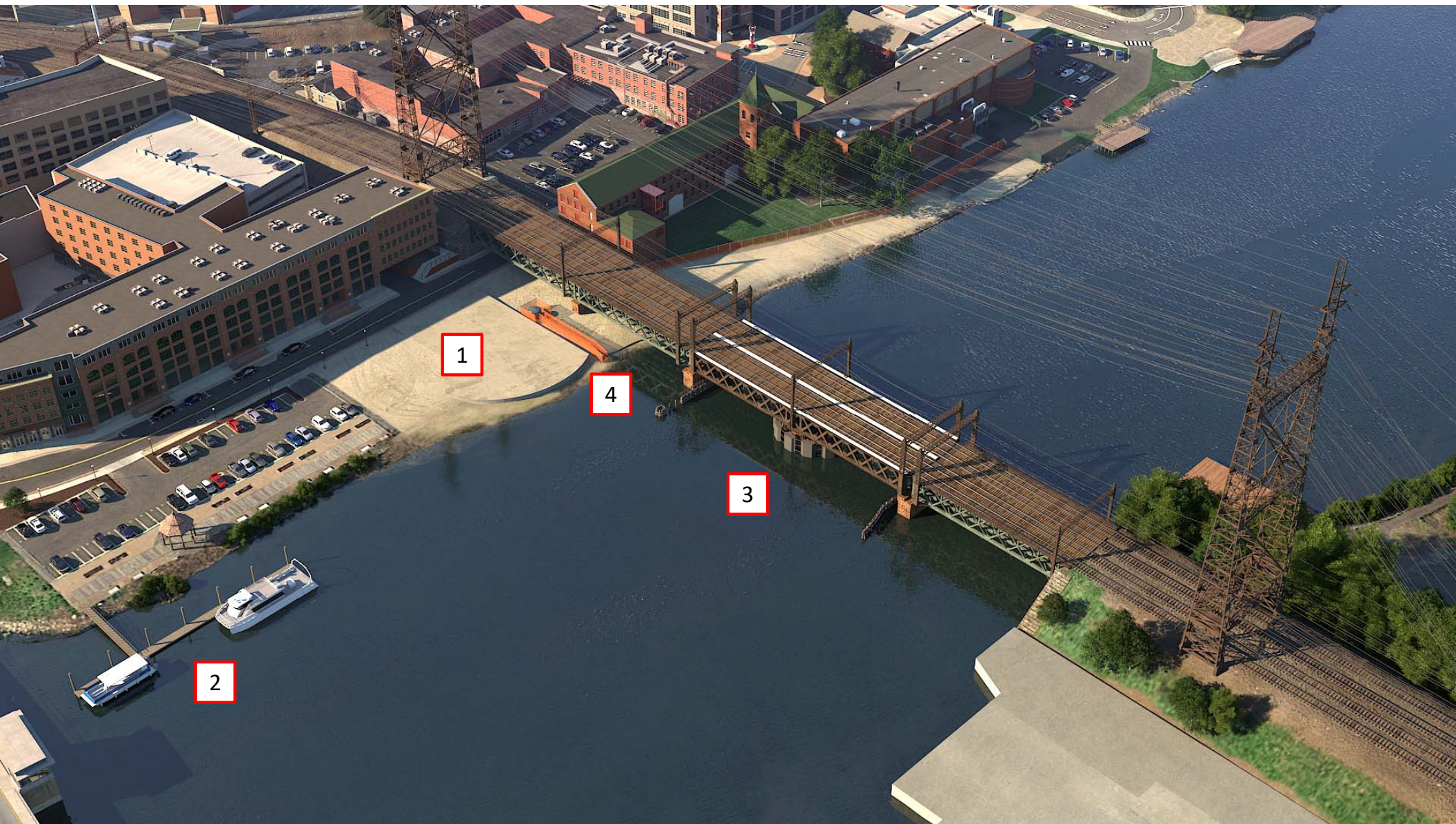


Construction Activities

- Temporary work platforms
- Pier construction
- Dredging
- Vessel relocation
- MNR ductbank and submarine cables
- Wetland recreation





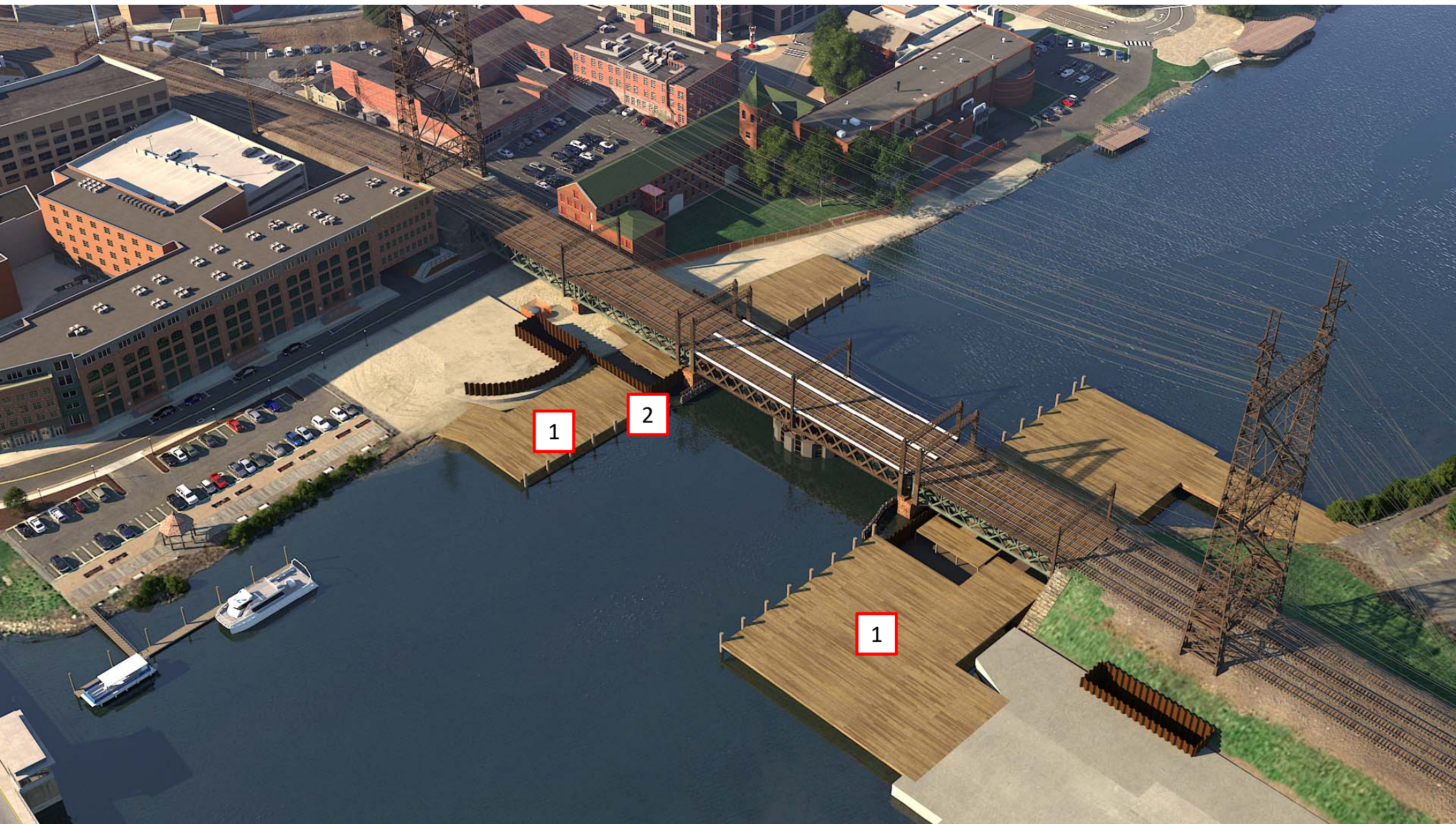


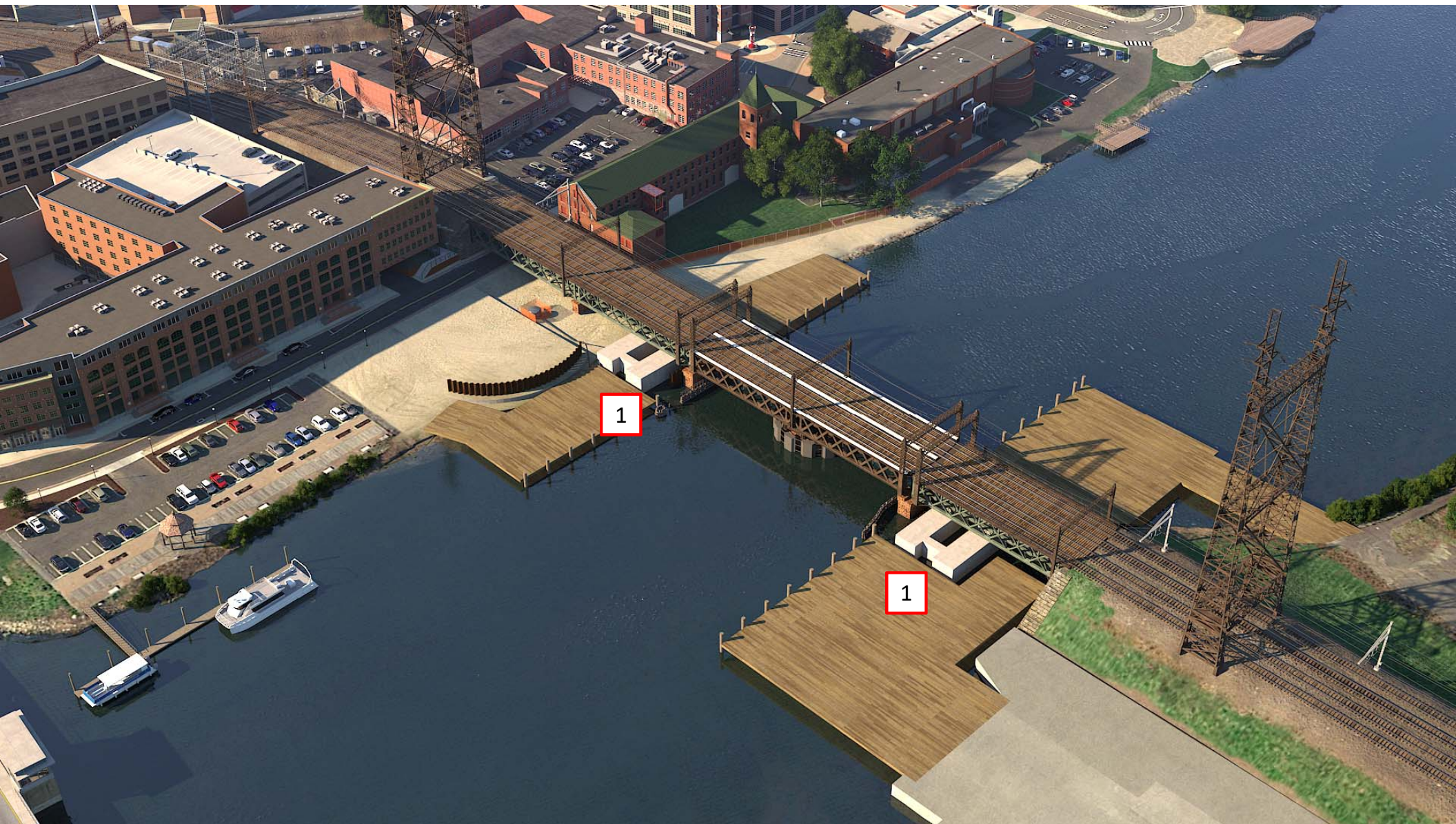
1

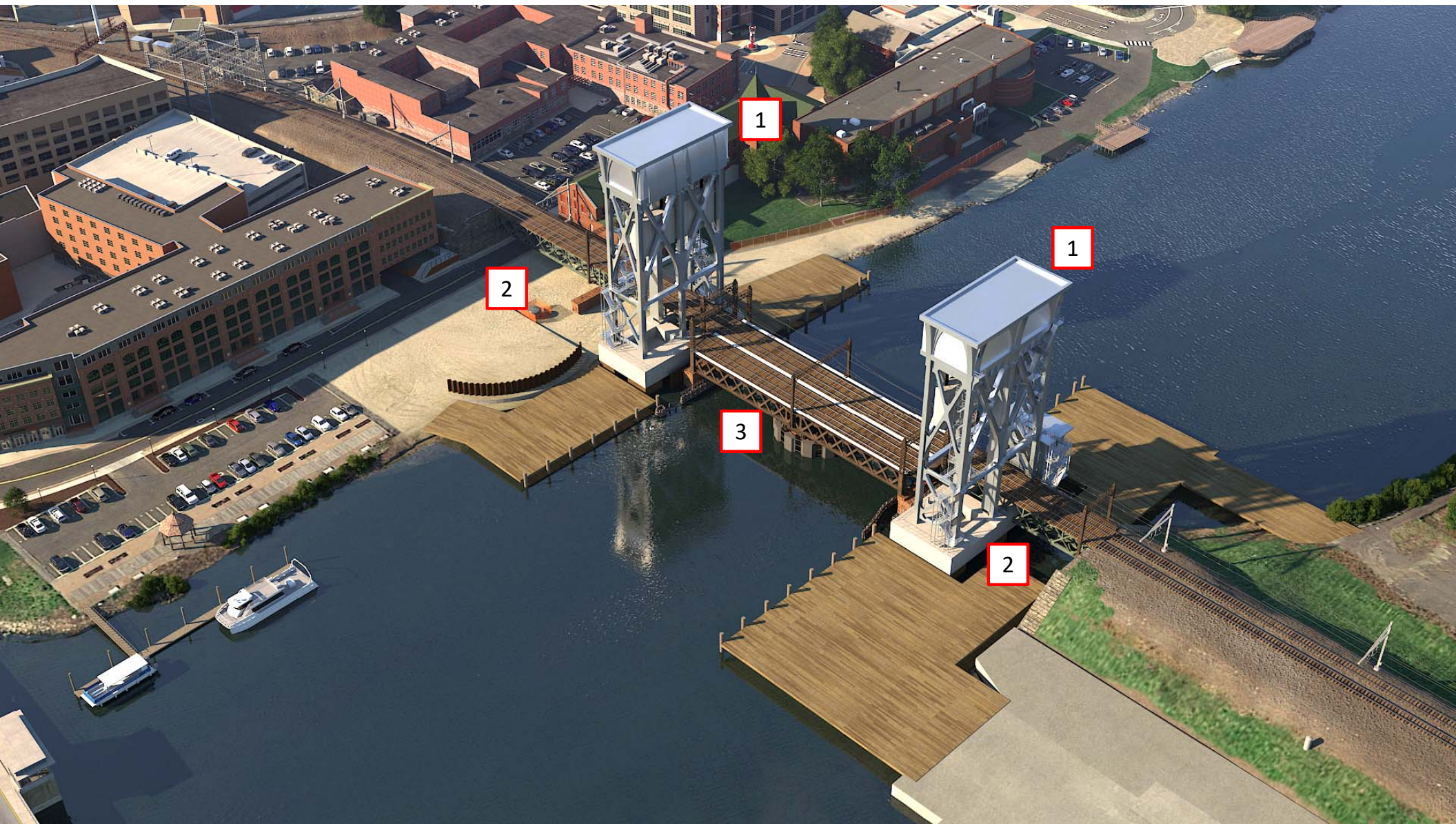
4

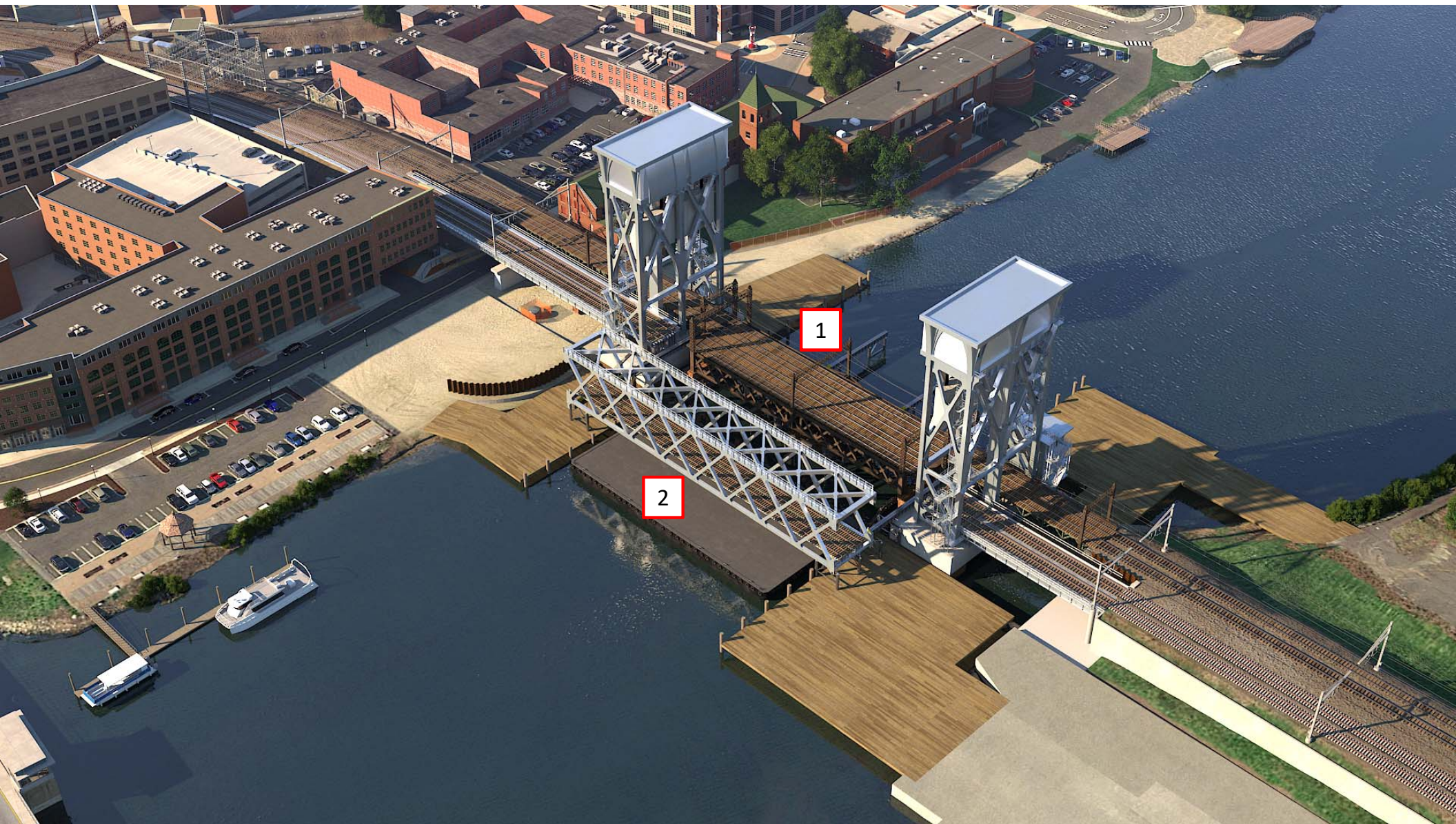
3

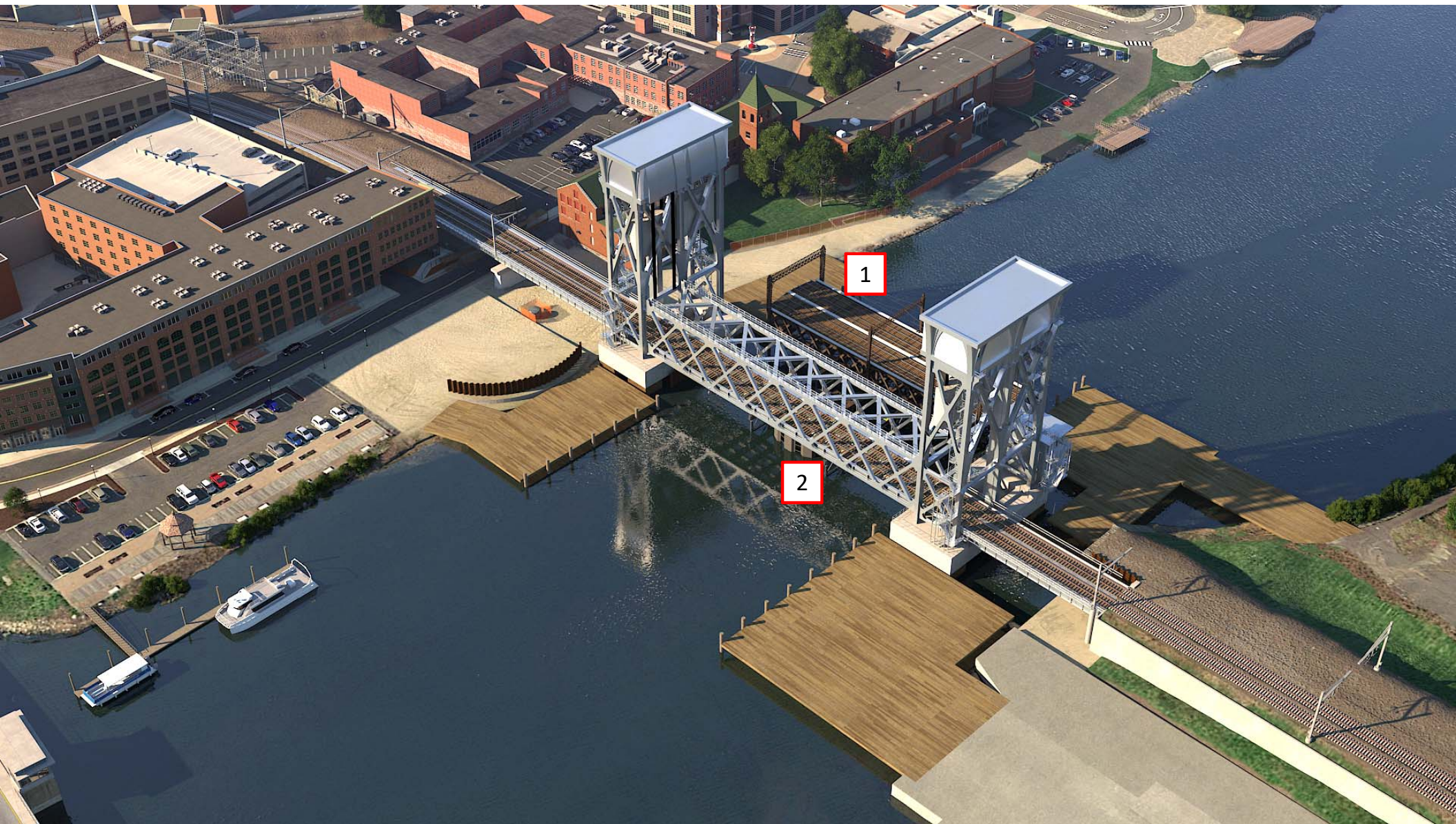
2















Work Platforms



www.walkbridgect.com



Work Platforms



www.walkbridgect.com

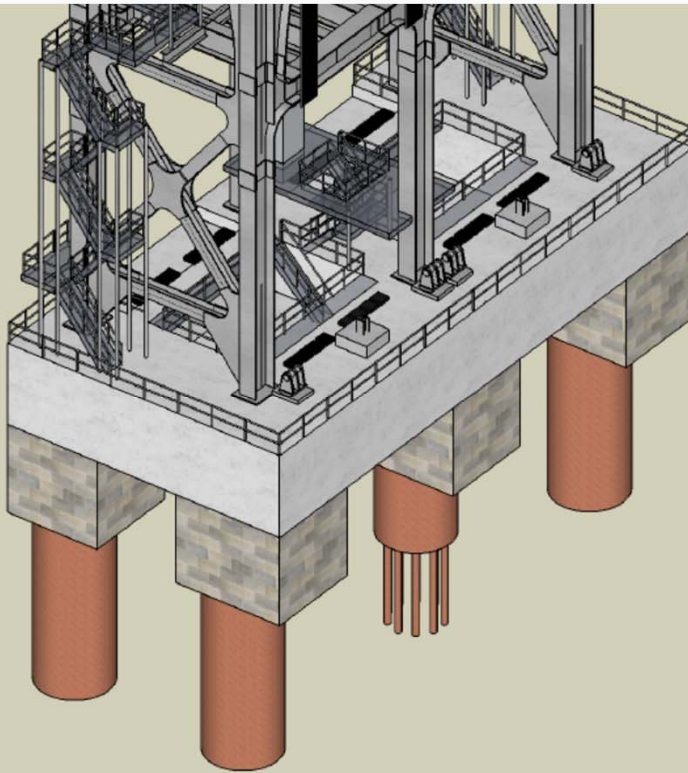
Work Platforms



www.walkbridgect.com



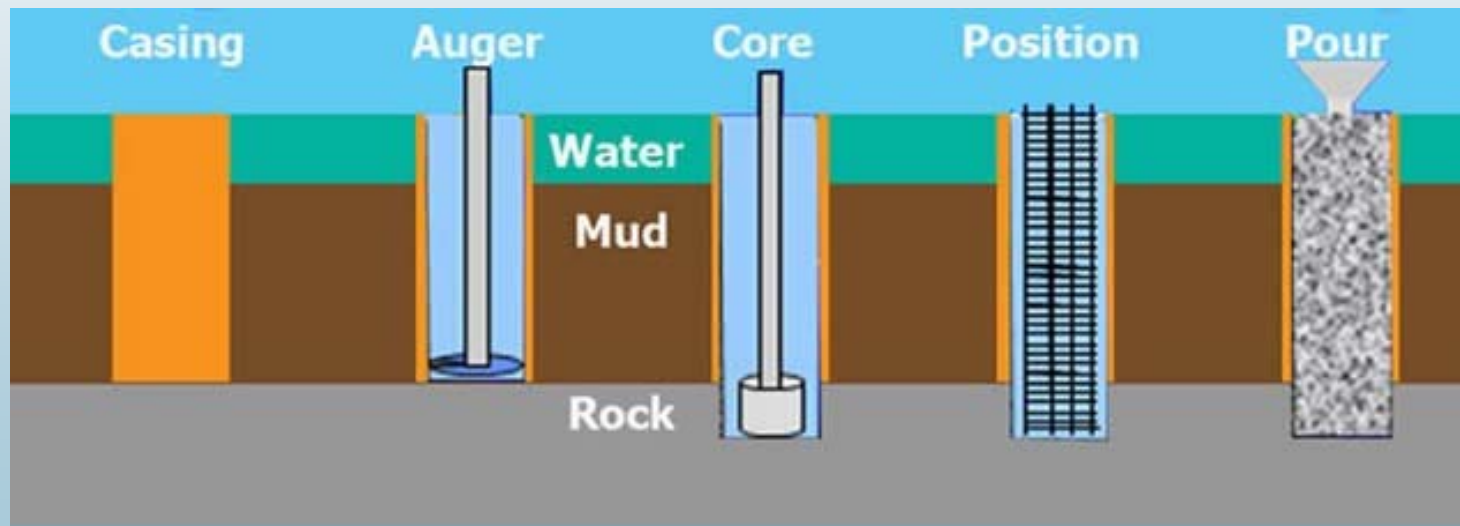
Lift Span Piers



www.walkbridgect.com



Lift Span Pier Foundations



www.walkbridgect.com

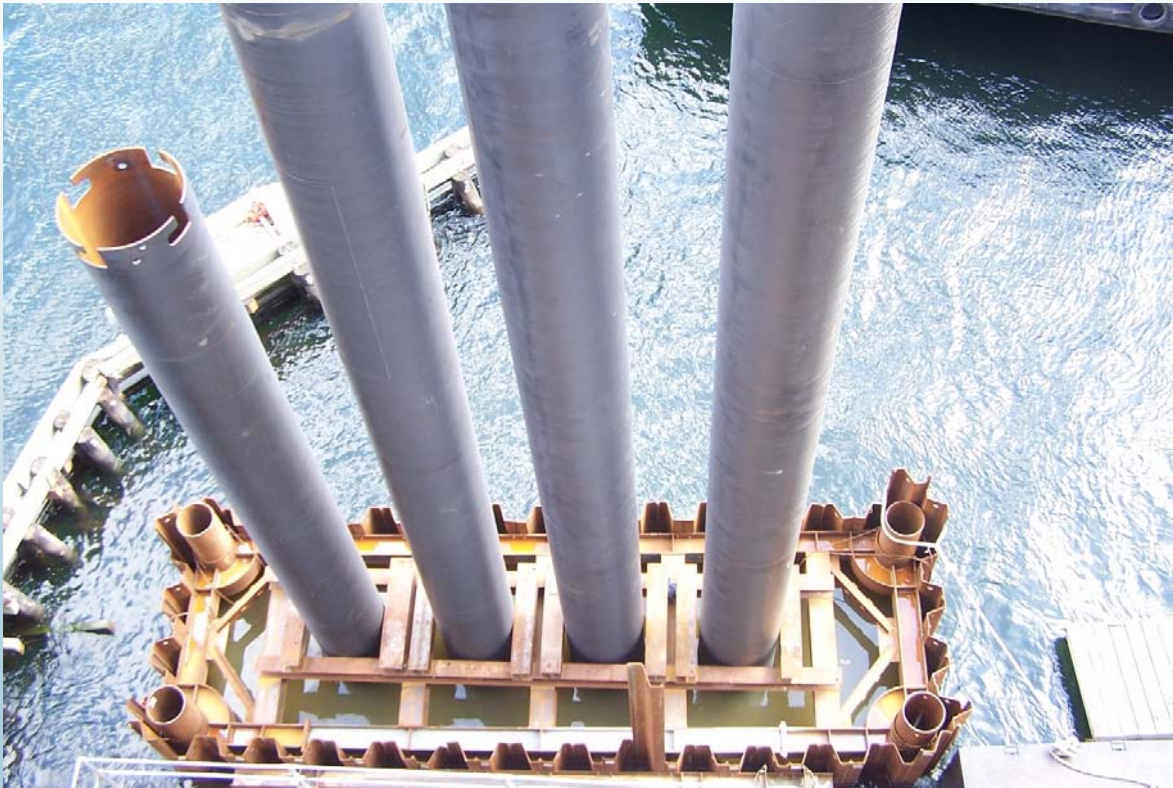


Marine Enclosures



www.walkbridgect.com

Drilled Shaft Casings



www.walkbridgect.com



Drilled Shaft Cleanout

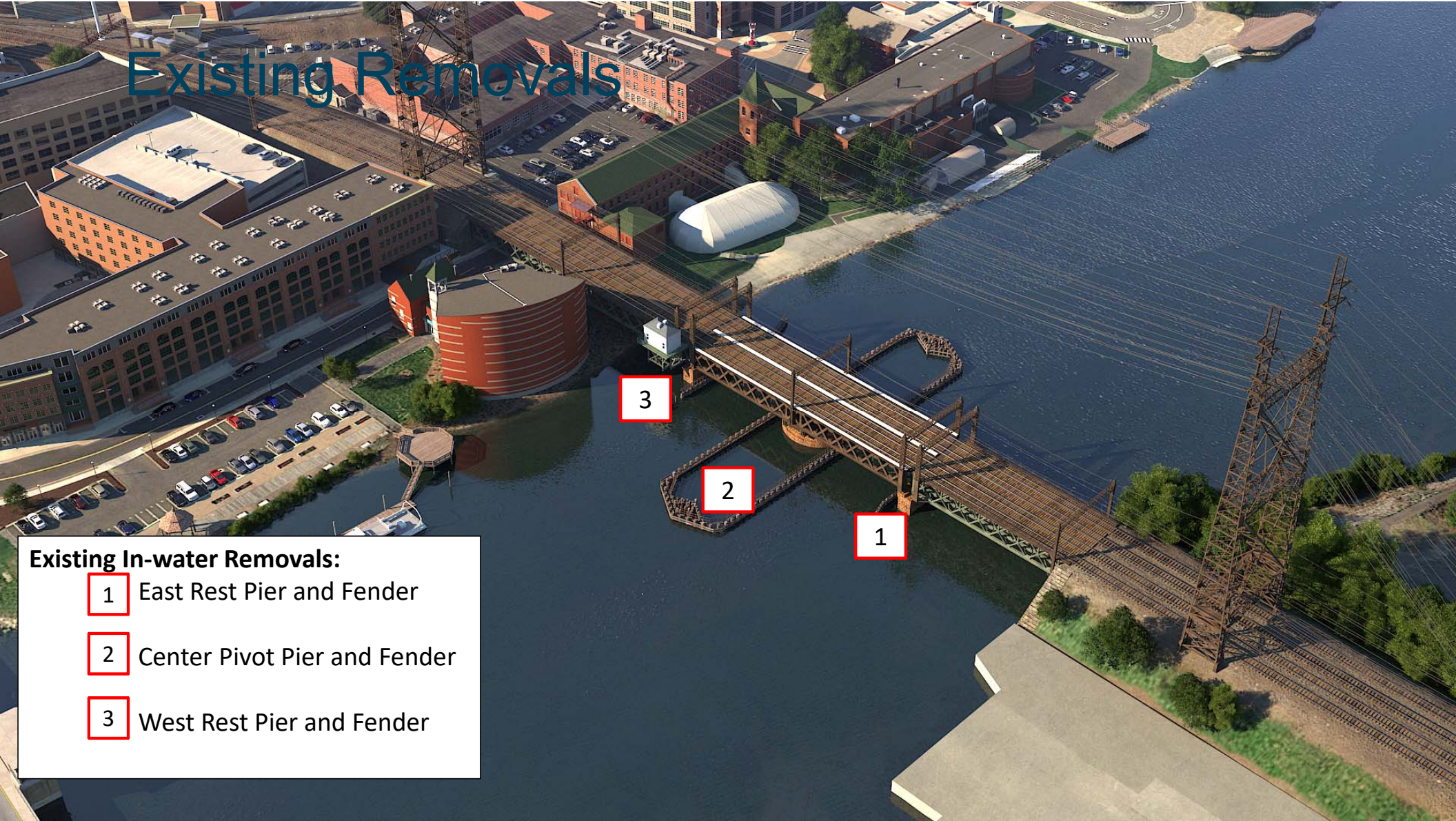


www.walkbridgect.com

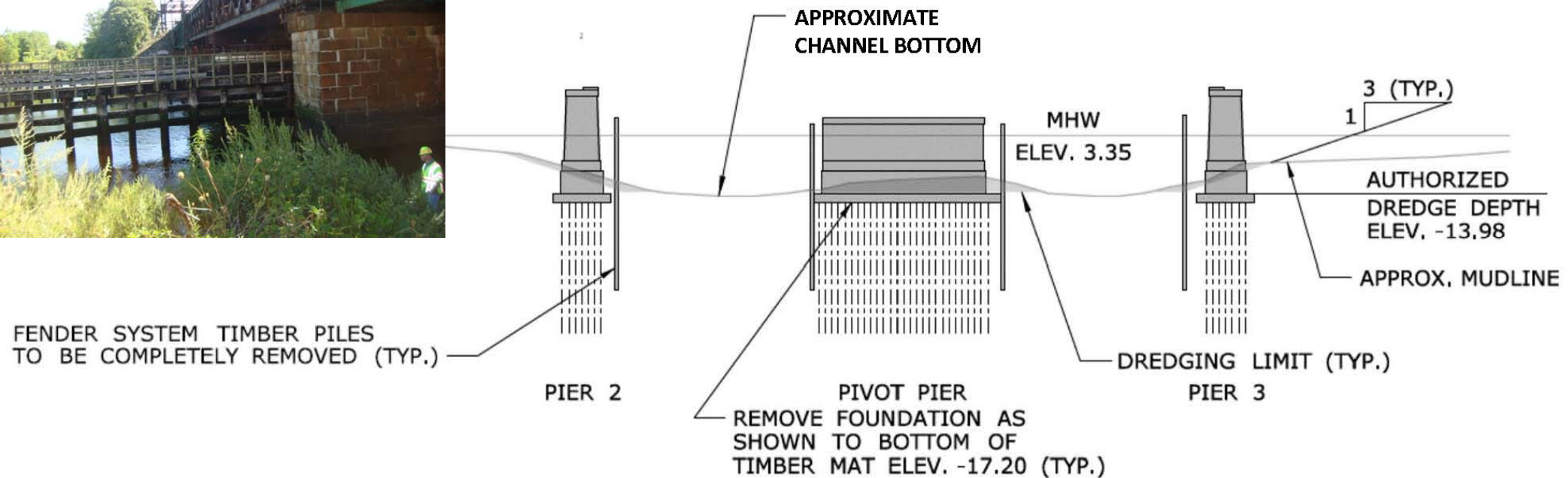
Existing Removals

Existing In-water Removals:

- 1 East Rest Pier and Fender
- 2 Center Pivot Pier and Fender
- 3 West Rest Pier and Fender



Existing Pier Removal



Dredging

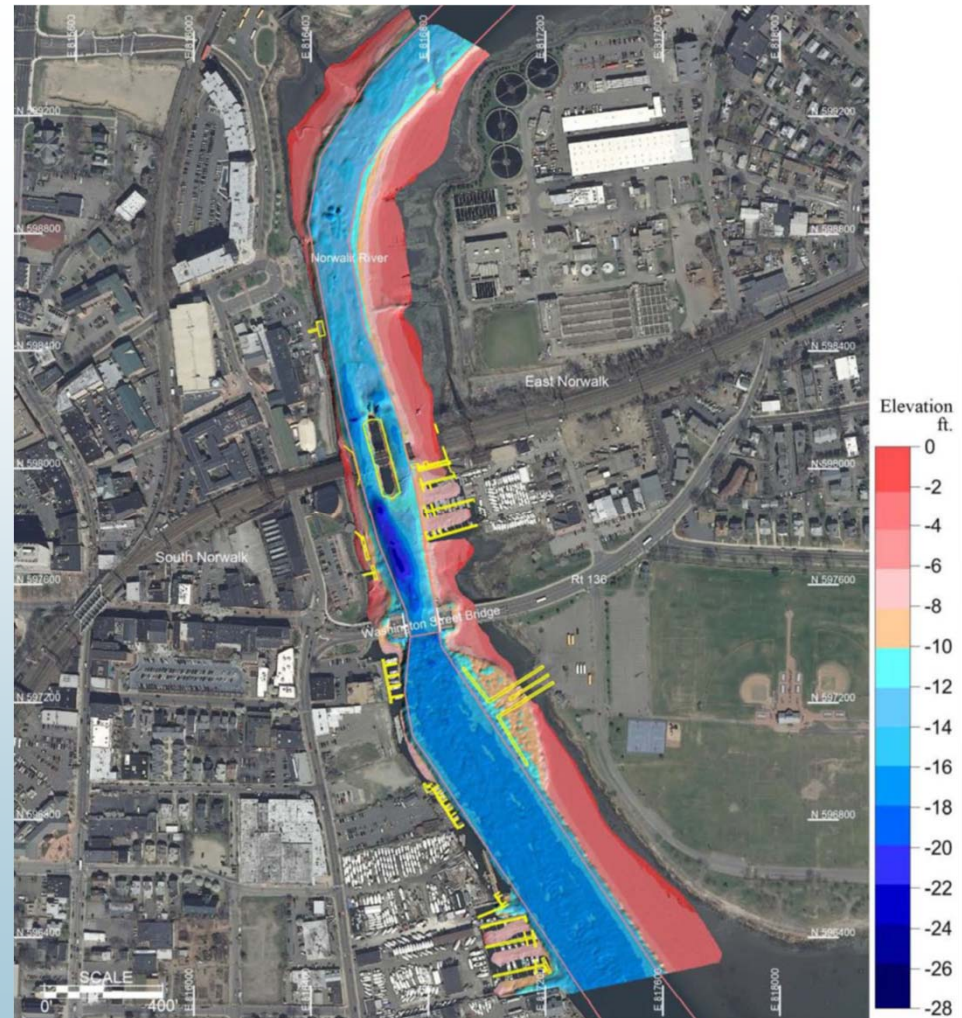
- Bridge/Channel Area
- Vessel Relocation Area
- Marine Staging Yard



www.walkbridgect.com



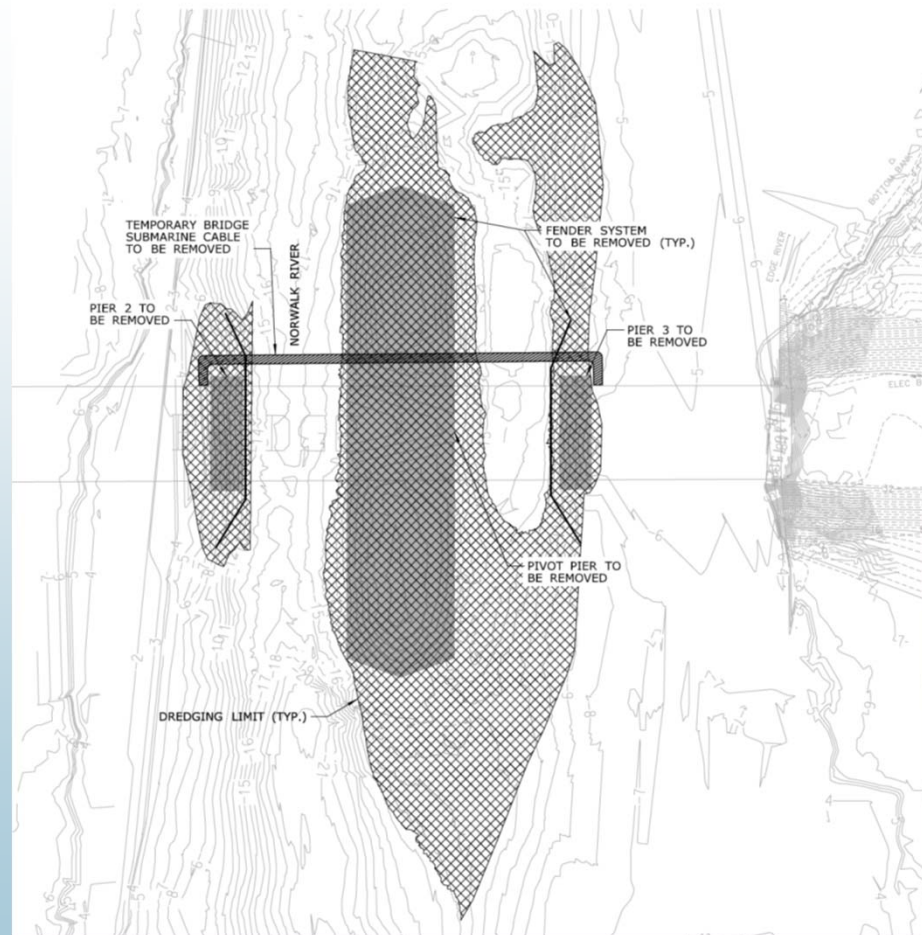
Bathymetry



www.walkbridgect.com



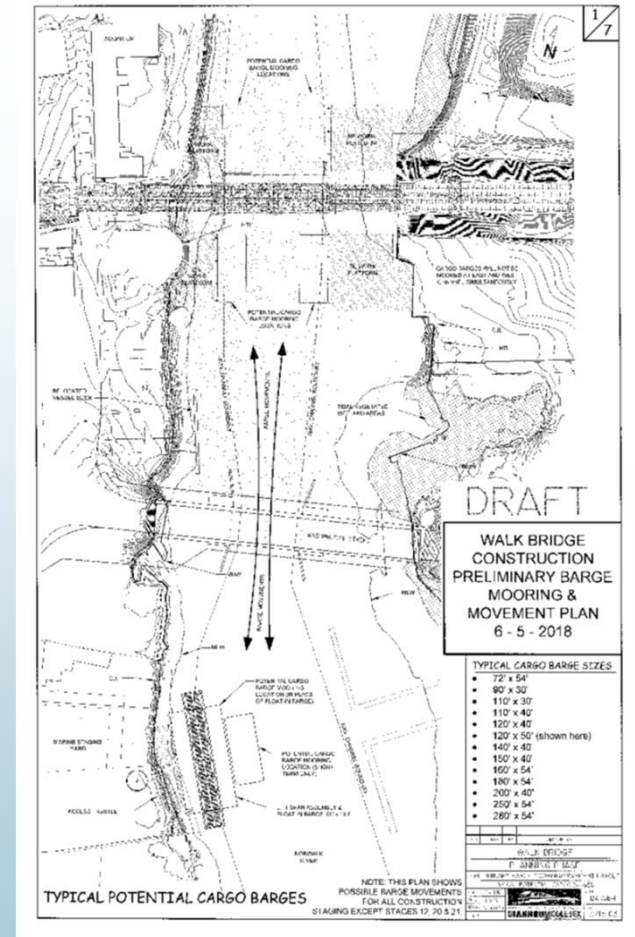
Channel Dredging



www.walkbridgect.com



Barge Movements



www.walkbridgect.com



Barge Mooring Locations

- Devine Brothers
- King Industries
- Walk Bridge Project Location
- Marine Staging Yard
- Long Island Sound Locations
- Subject to USCG Approval

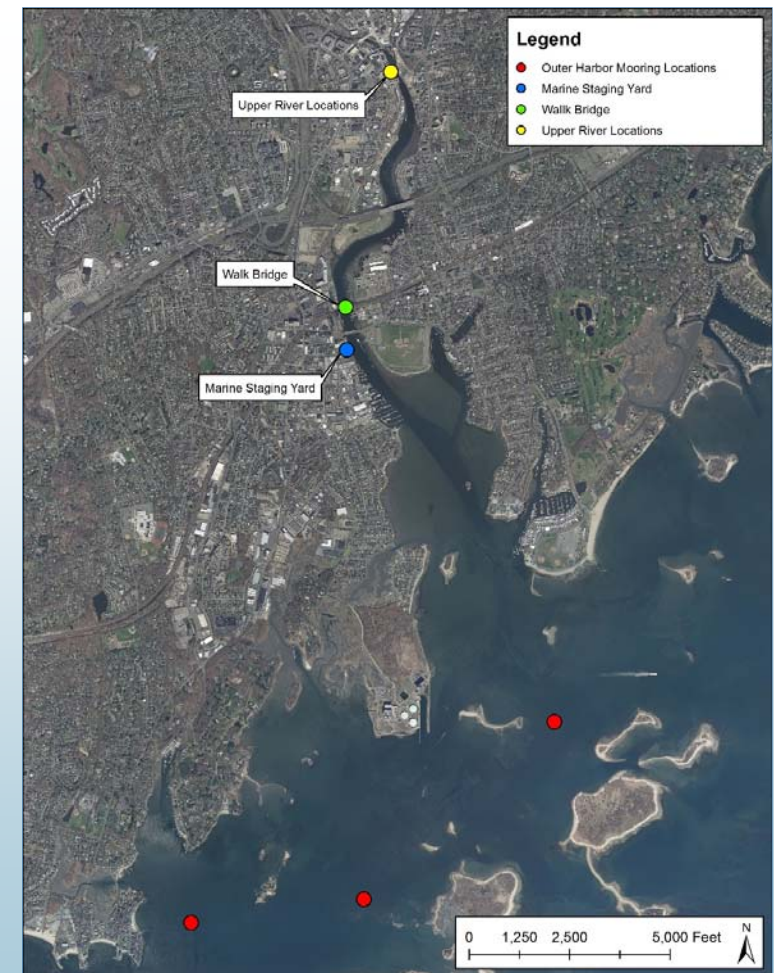


www.walkbridgect.com



Barge Mooring Locations

- Devine Brothers
- King Industries
- Walk Bridge Project Location
- Marine Staging Yard
- Long Island Sound Locations
- Subject to USCG Approval



Coordination

- NOAA National Marine Fisheries Service Coordination
- U.S. Fish and Wildlife Service Federal Listed Species Coordination
- CT DEEP NDDDB and Wildlife Division
- CT DEEP Fisheries Division Coordination
- U.S. Coast Guard Coordination
- U.S. Army Corps of Engineers Consultation
- CT Department of Agriculture/Bureau of Aquaculture Consultation
- Norwalk Harbor Management Commission Consultation
- Norwalk Shellfish Commission Consultation
- Norwalk Harbor Master



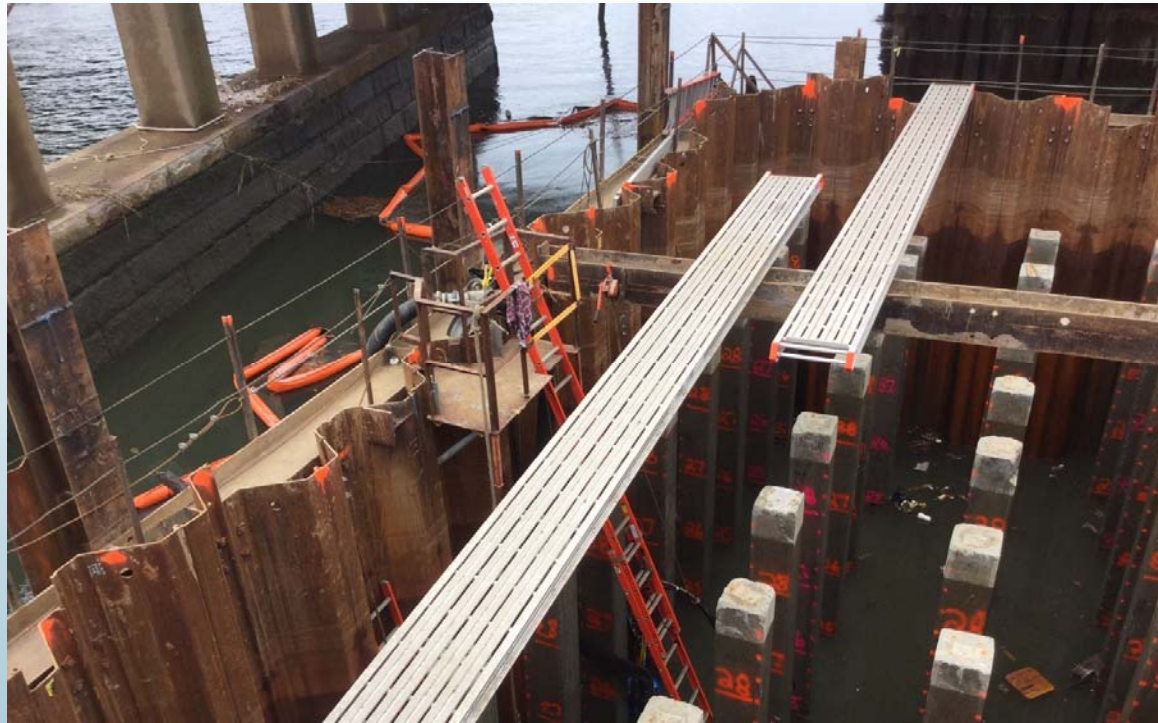
In-water Project Commitments

- Time of Year Restrictions
 - Dredging will occur between Dec. 1 – Jan. 31
 - Apr. 1 – Jun. 30 work will occur between 1 hour after sunrise and 1 hour before sunset for pile driving activities
 - No unconfined in-water silt producing activities from Feb. 1 – Nov. 30
- Work Windows
 - 12 hours on, 12 hours off for pile driving activities
- Use of soft starts at the beginning of each shift
- Only occupy 50% of river at a time, except for limited closures
- All temporary construction access restored to pre-construction conditions



Mitigation Measures

- *Marine Enclosures*
- Turbidity Curtains
- Bubble Curtains
- Wetland Restoration



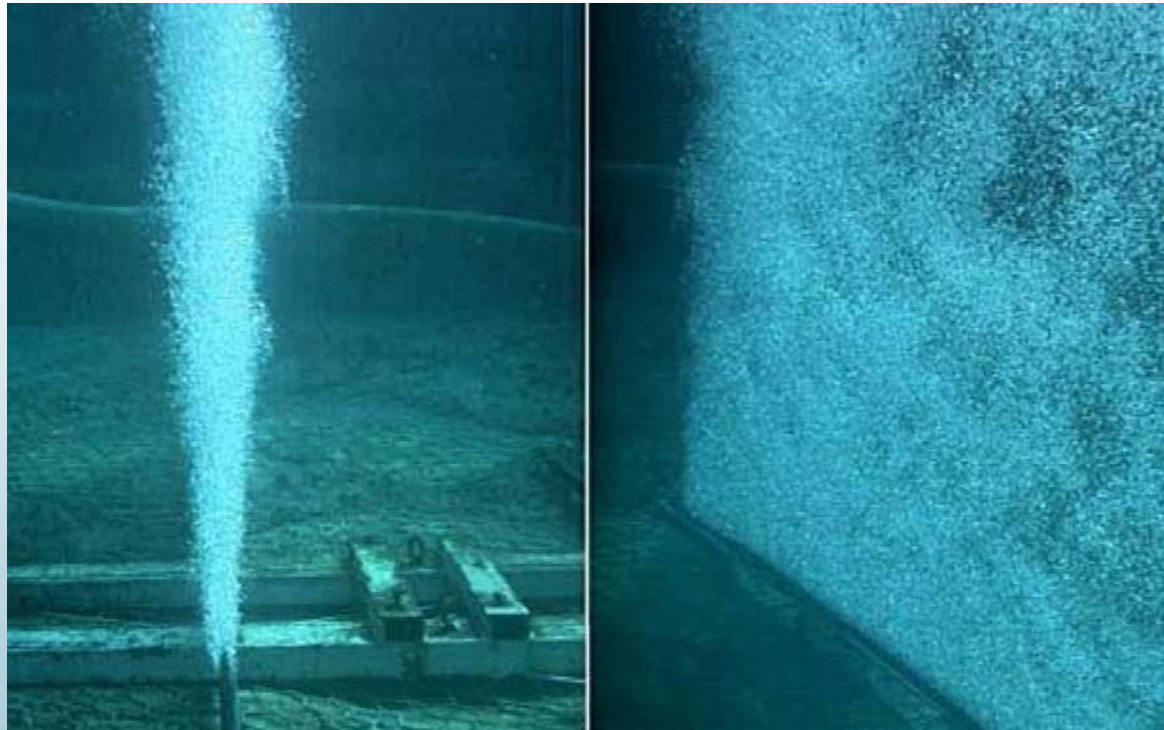
Mitigation Measures

- Marine Enclosures
- *Turbidity Curtains*
- Bubble Curtains
- Wetland Restoration



Mitigation Measures

- Marine Enclosures
- Turbidity Curtains
- ***Bubble Curtains***
- Wetland Restoration



Vegetated Tidal Wetland Restoration



www.walkbridgect.com



Vegetated Tidal Wetland Restoration



www.walkbridgect.com



Permits

- NOAA/NMFS Section 7 Informal Consultation
- NOAA/NMFS Essential Fish Habitat Assessment
- U.S. Army Corps of Engineers Section 408 Permit
- U.S. Army Corps of Engineers Section 10/Section 404 Permit
- CTDEEP Structures, Dredge and Fill Permit, Tidal Wetlands Permit, Section 401 Water Quality Certification, Coastal Consistency Review (CZM)
- CTDEEP Flood Management Certification
- CTDEEP Construction Stormwater General Permit
- U.S. Coast Guard Section 9 Bridge Permit
- General Permit for Contaminated Soil/Sediment Management
- FAA Notice of Proposed Construction



Permit Plates

- Overview Plates
 - Existing & Proposed Conditions
 - Temporary Conditions
 - Tidal Wetland Mitigation
- Construction Activity Plates – 15 Major Activities
 - Trestle Construction
 - Pier Construction
 - Submarine Cable Installation
 - Dredging





Permit Plates



www.walkbridgect.com



Next Steps

- Submit Permit Plates to Commission - within the next 2 months
- Commission Meeting – to follow permit plate submission
- Permit Filing – early 2019





Questions & Comments



www.walkbridgect.com





www.walkbridgect.com





www.walkbridgect.com

