

Walk Bridge Project

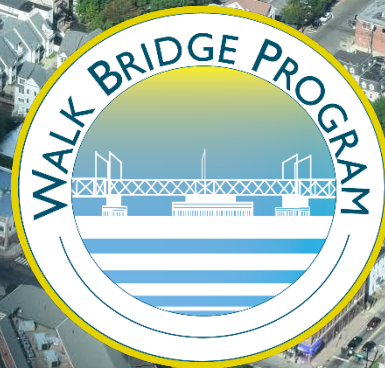
Norwalk Shellfish Commission

Permit Pre-application Coordination

February 7, 2019



www.walkbridgect.com



Meeting Agenda

1. Introductions & Meeting Purpose
2. Project Overview and Update
3. Overview of Permit Plates and Construction Activities
4. Dredging Permit Plates
5. Dredging Protective Measures
6. Water Quality Monitoring Program
7. Sediment Dewatering Program
8. Wetland Mitigation
9. Wetland Mitigation Protective Measures
10. Preliminary Barge Mooring
11. Next Steps
12. Questions & Comments





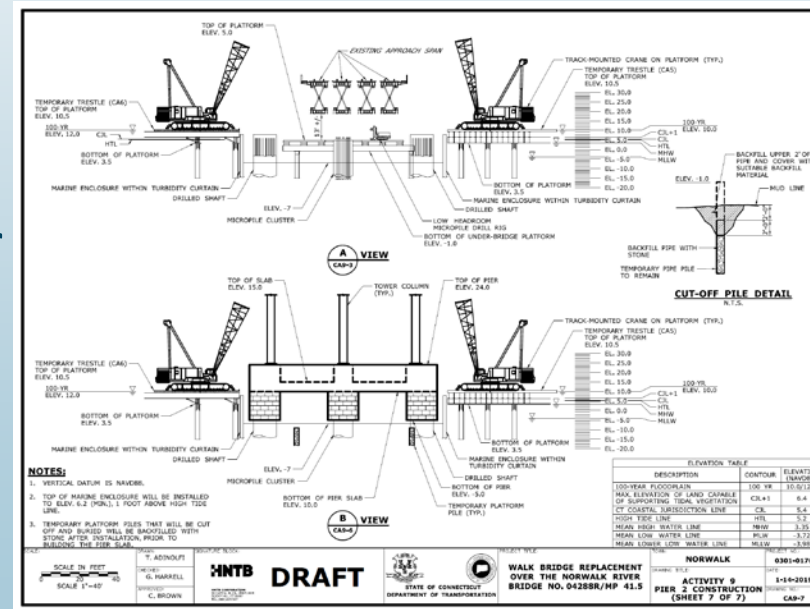
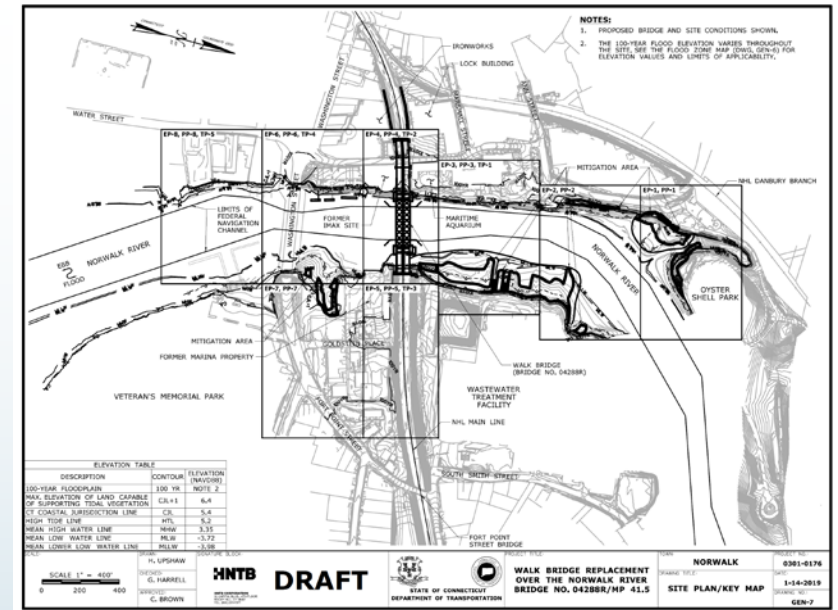
Project Update

- Advancing project design
- Advancing preparation of permit applications including plates, impact quantities, narratives and mitigation
- Ongoing coordination with U.S. Army Corps of Engineers, U.S. Coast Guard, and CT DEEP
- Ongoing coordination with Norwalk Shellfish Commission and Harbor Management Commission
- Ongoing coordination with City



Permit Plates

- Overview Plates
 - Existing & Proposed Conditions
 - Temporary Conditions
 - Tidal Wetland Mitigation
- Construction Activity Plates
 - Representation of construction activity within resource areas
 - Step by step details for 18 Major Activities
 - Plan views
 - Elevation/Section Views



Construction Activity Overview



NUMBER	CONSTRUCTION ACTIVITY
1	IMAX REMOVAL
2	DUCT BANK INSTALLATION
3	VESSEL DOCK RELOCATION
4	MARINE STAGING YARD
5	NORTHWEST TRESTLE
6	SOUTHWEST TRESTLE
7	NORTHEAST TRESTLE
8	SOUTHEAST TRESTLE
9	PIER 2
10	PIER 3
11	SUBMARINE CABLE INSTALLATION
12	SUBMARINE CABLE REMOVAL
13	SWING SPAN REMOVAL
14	EXISTING PIER REMOVAL
15	FENDER INSTALLATION
16	WETLAND MITIGATION
17	DREDGING
18	LIFT SPAN INSTALLATION

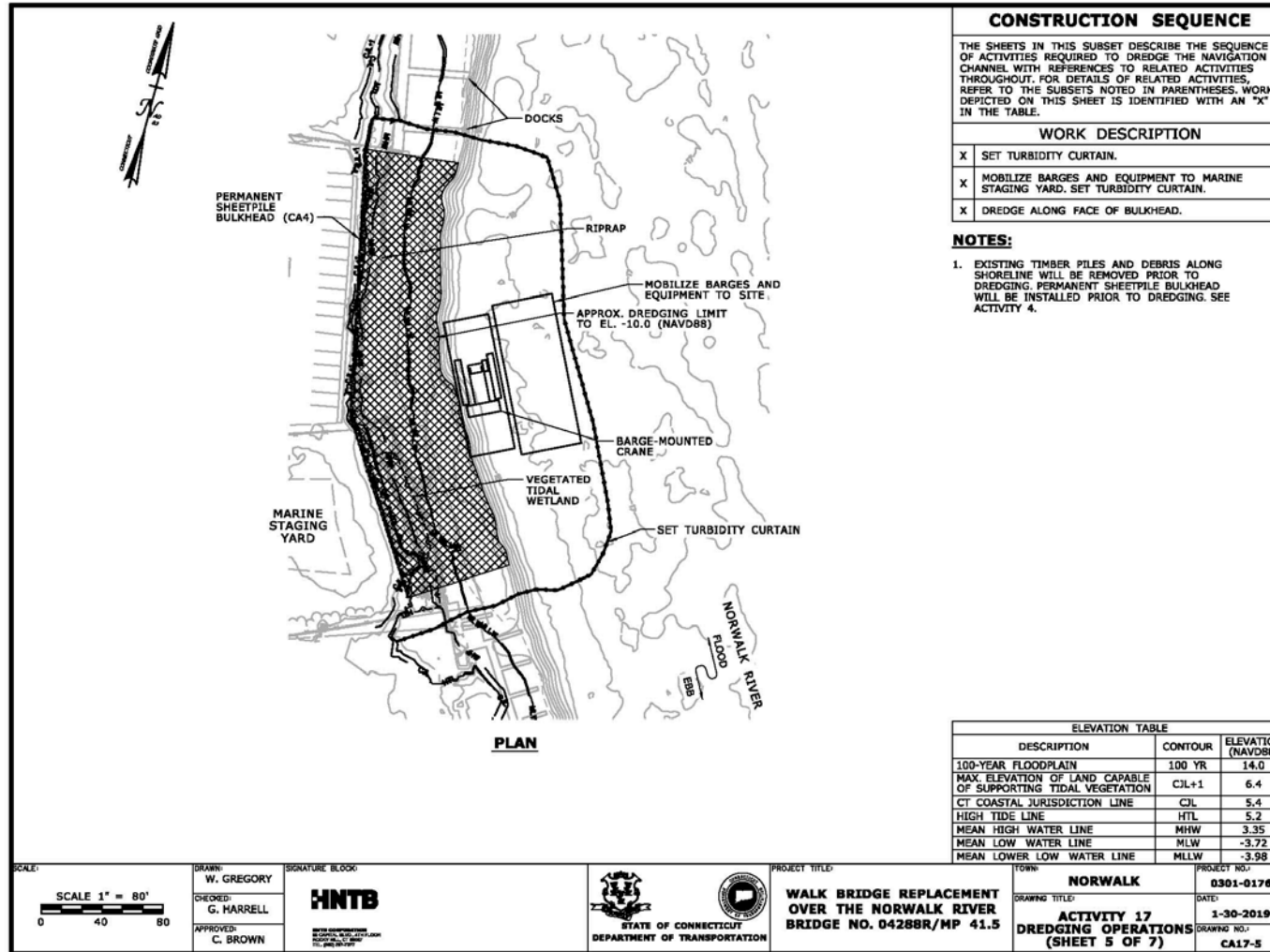


Dredging

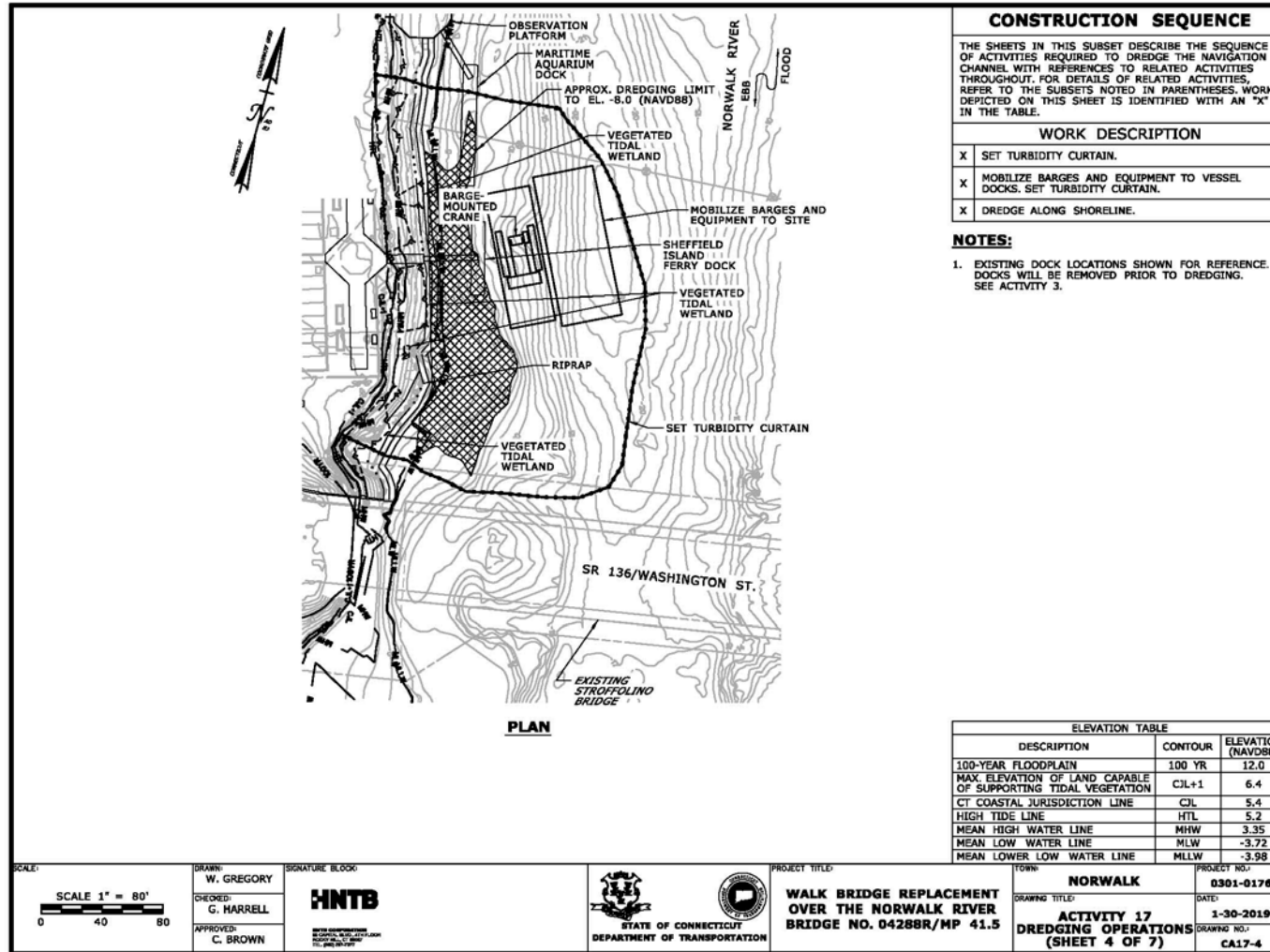
- Bridge/Channel Areas
- Vessel Relocation Area
- Marine Staging Yard
Submarine Cables
- Dredging in main channel
will occur over multiple
construction seasons



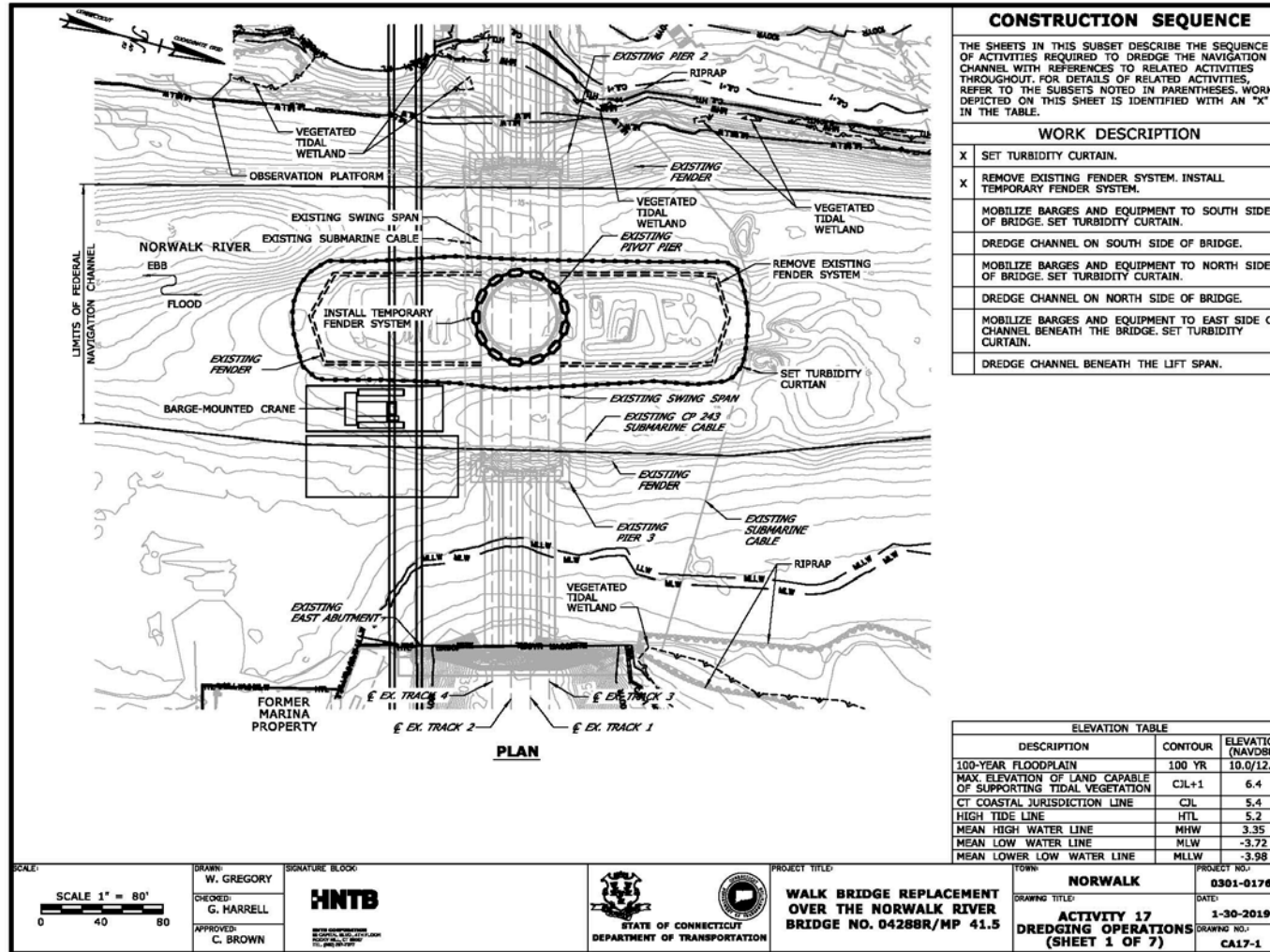
Dredging – Marine Staging Yard Area



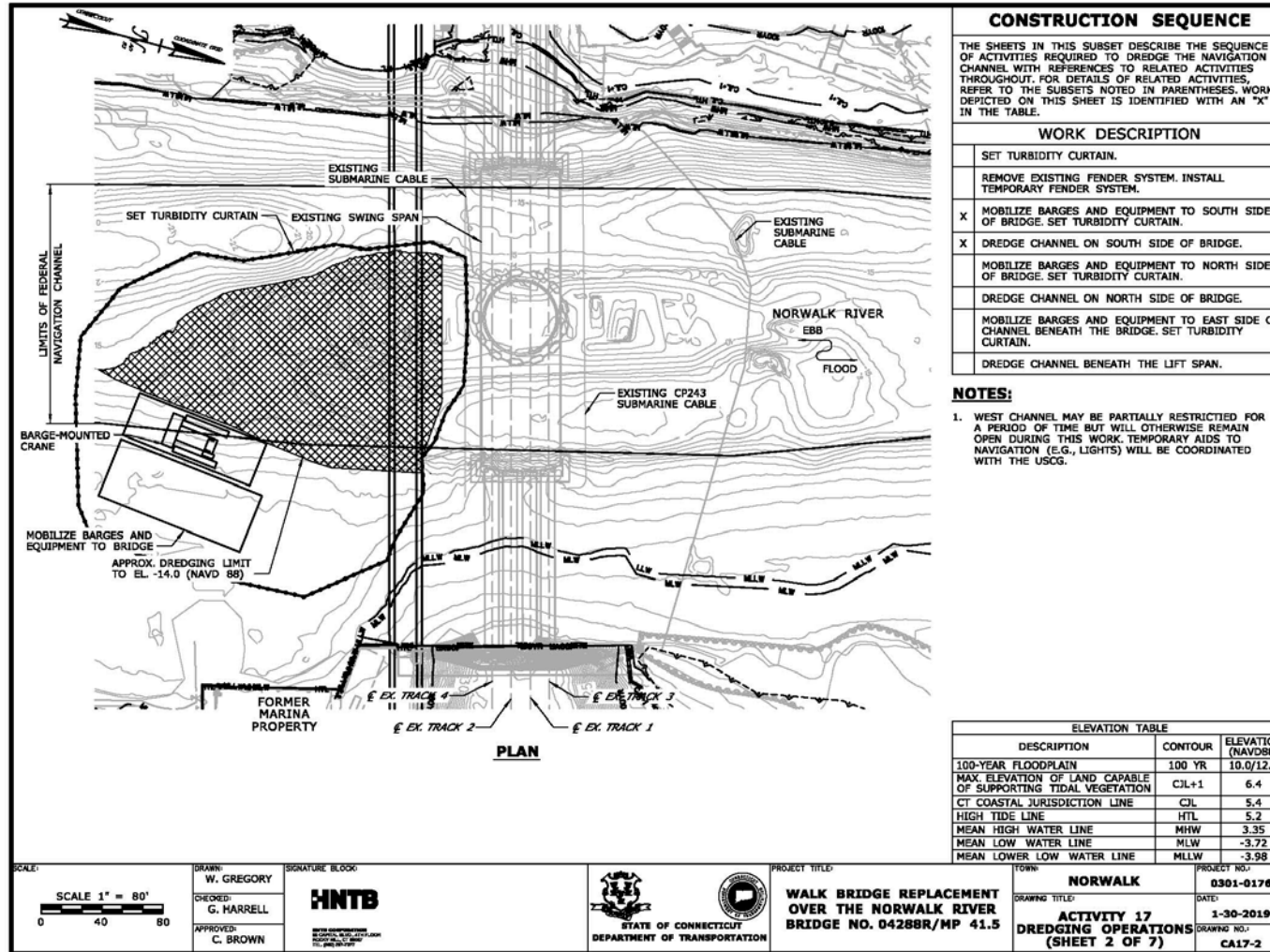
Dredging – Vessel Dock Relocation Area



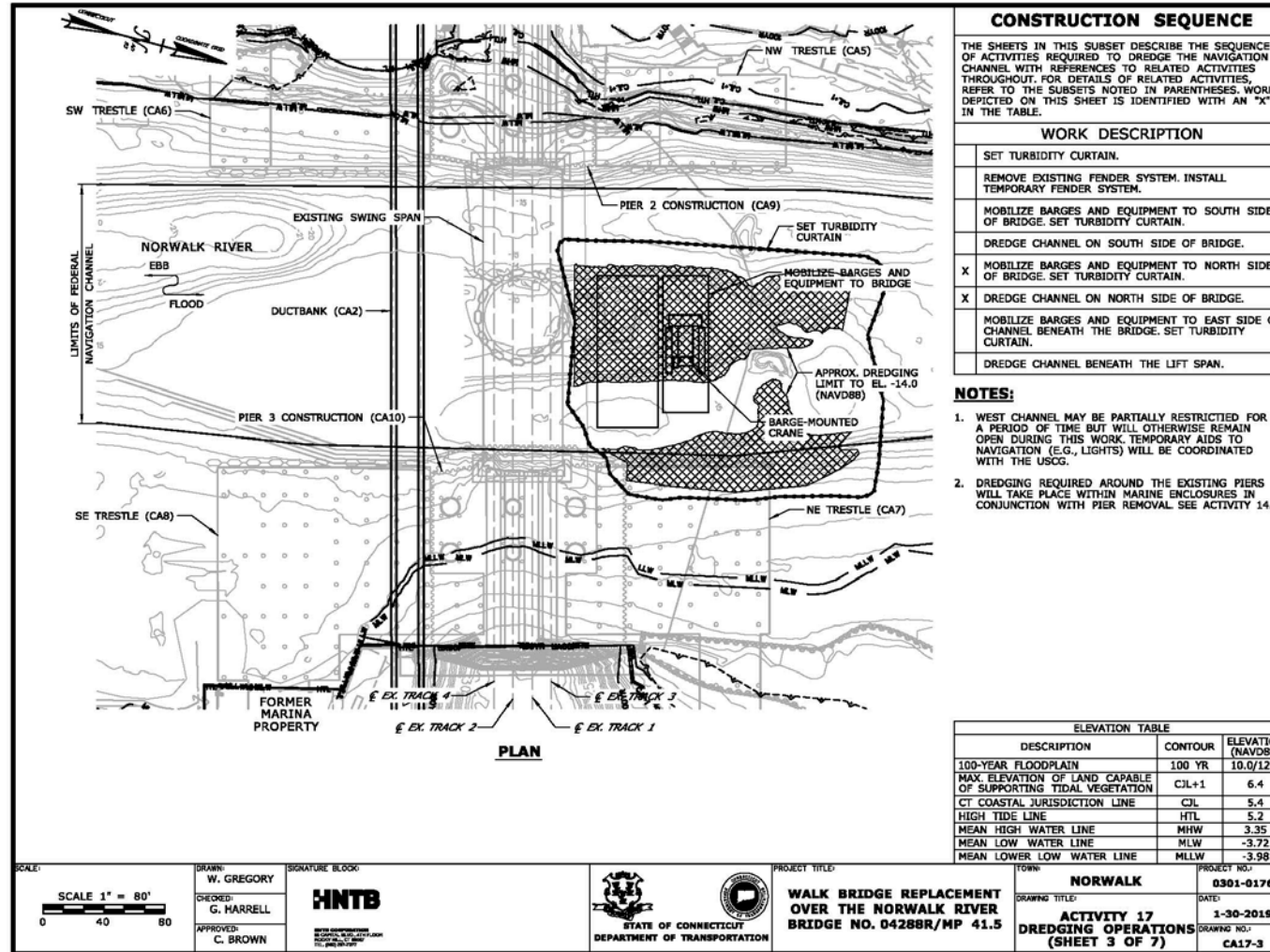
Dredging – Remove Center Pier Fender



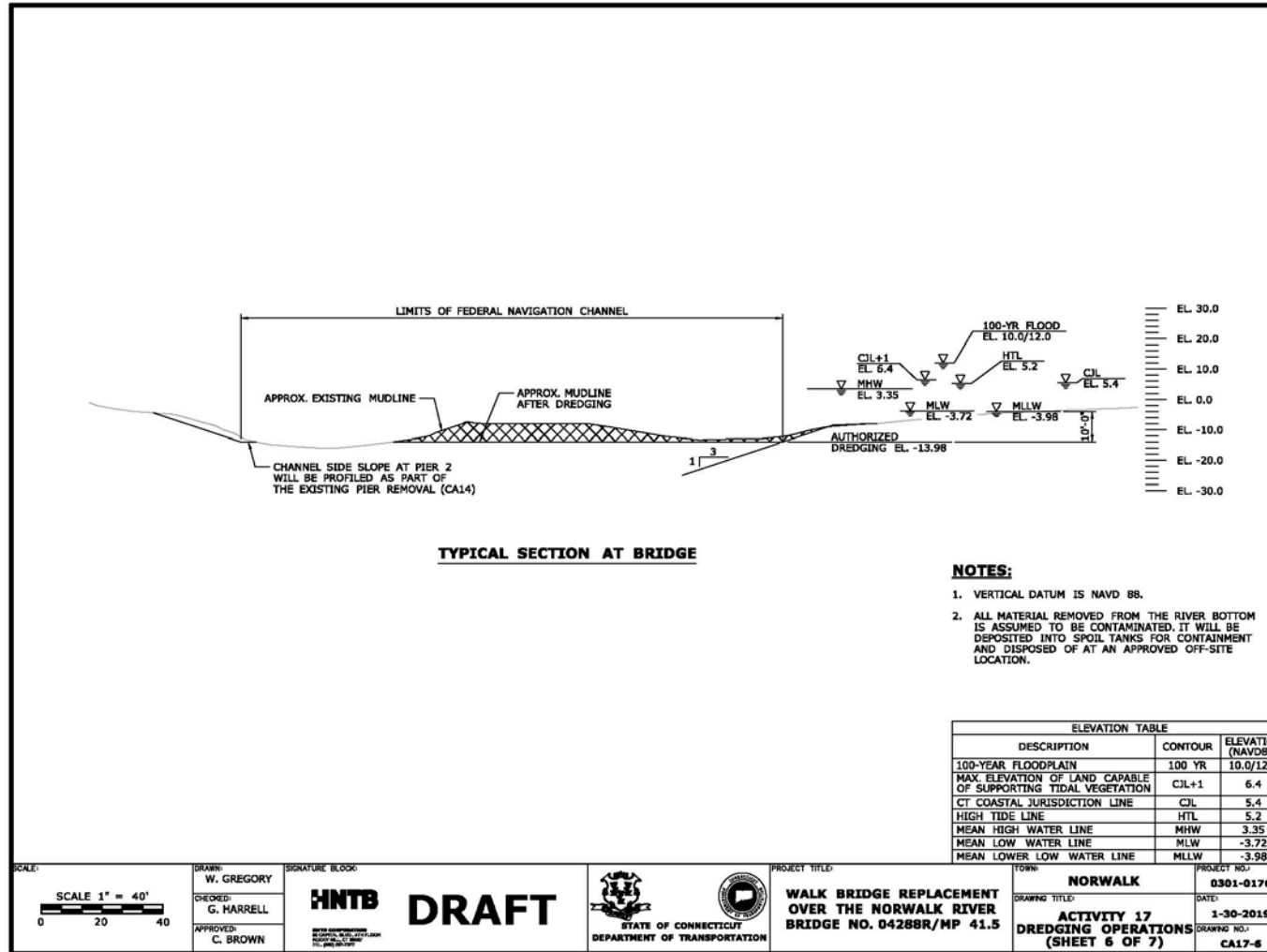
Dredging – South Side of Bridge



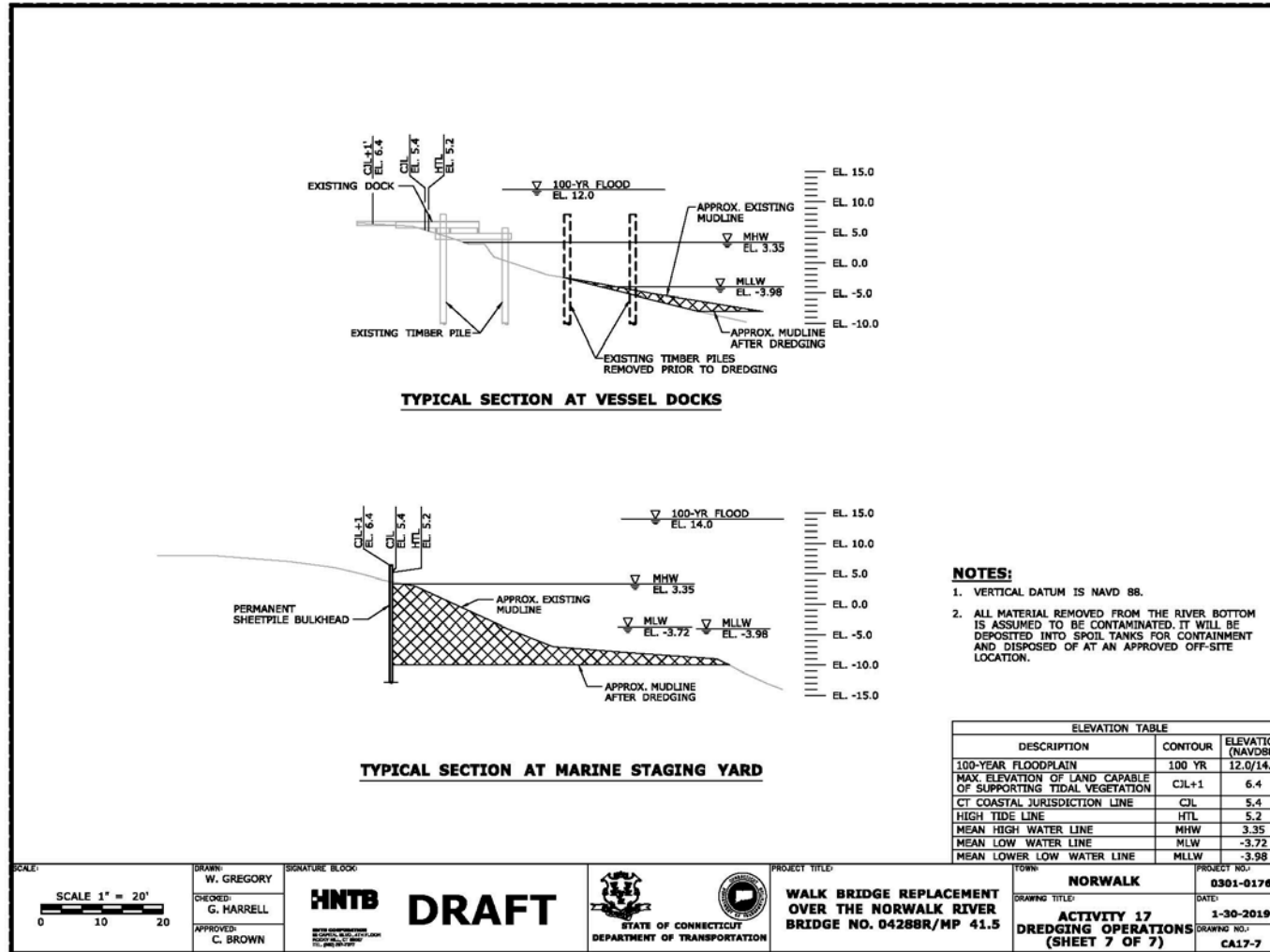
Dredging – North Side of Bridge



Dredging - Typical Section at Bridge Area

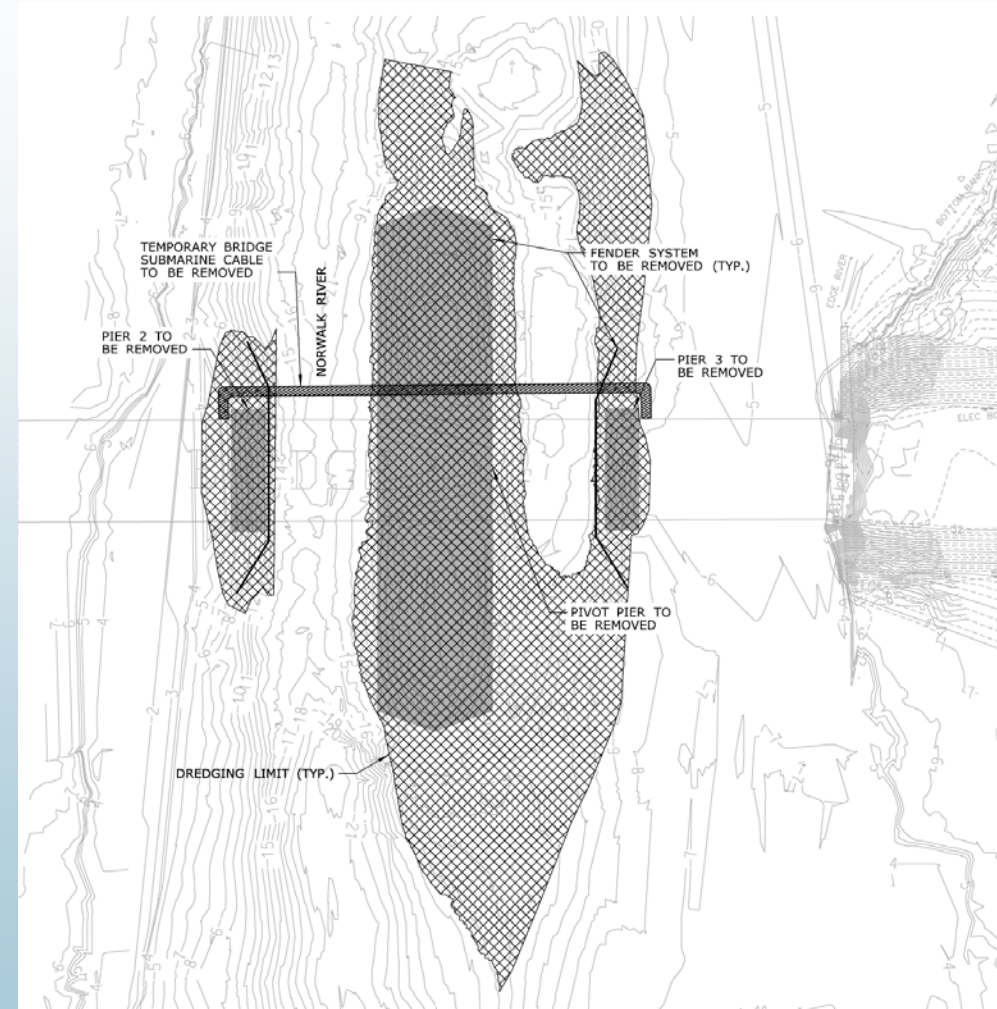


Dredging – Typical Sections at Vessel Docks & Staging Yard



Dredging Protective Measures

- Turbidity Curtains
- Turbidity Monitoring
- Time of Year Restrictions
 - Dredging will occur between Dec. 1 – Jan. 31



Water Quality Monitoring Program

- DOT will develop a program
 - Pre-Construction Baseline monitoring
 - ~ 3 locations in vicinity of Walk Bridge
 - Monitoring Parameters (Turbidity, Dissolved Oxygen, Conductivity, pH)
 - Camera monitoring
 - Construction Monitoring
 - Upstream Locations (North & South of Bridge) to serve as Background
 - In the vicinity of the work activity
 - Action Levels
 - Corrective Actions/Investigation Process
 - Reporting
 - Who is performing the monitoring
 - Equipment specification & maintenance

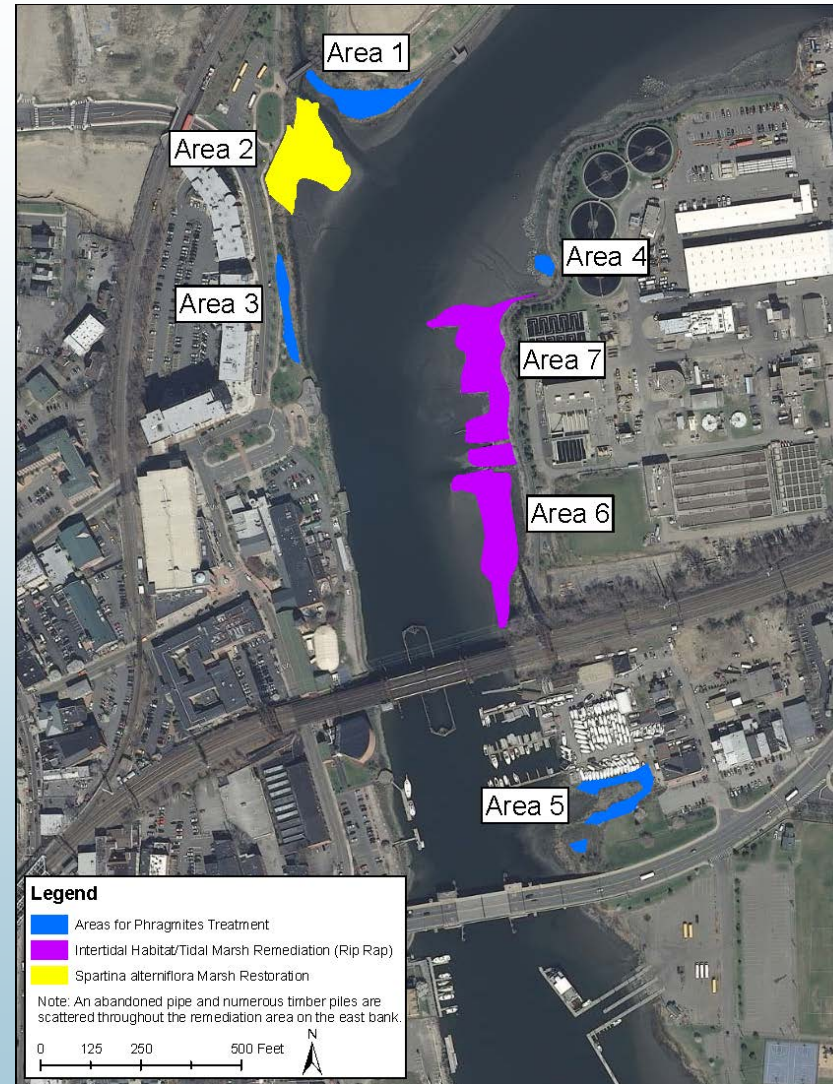


Sediment Dewatering Program

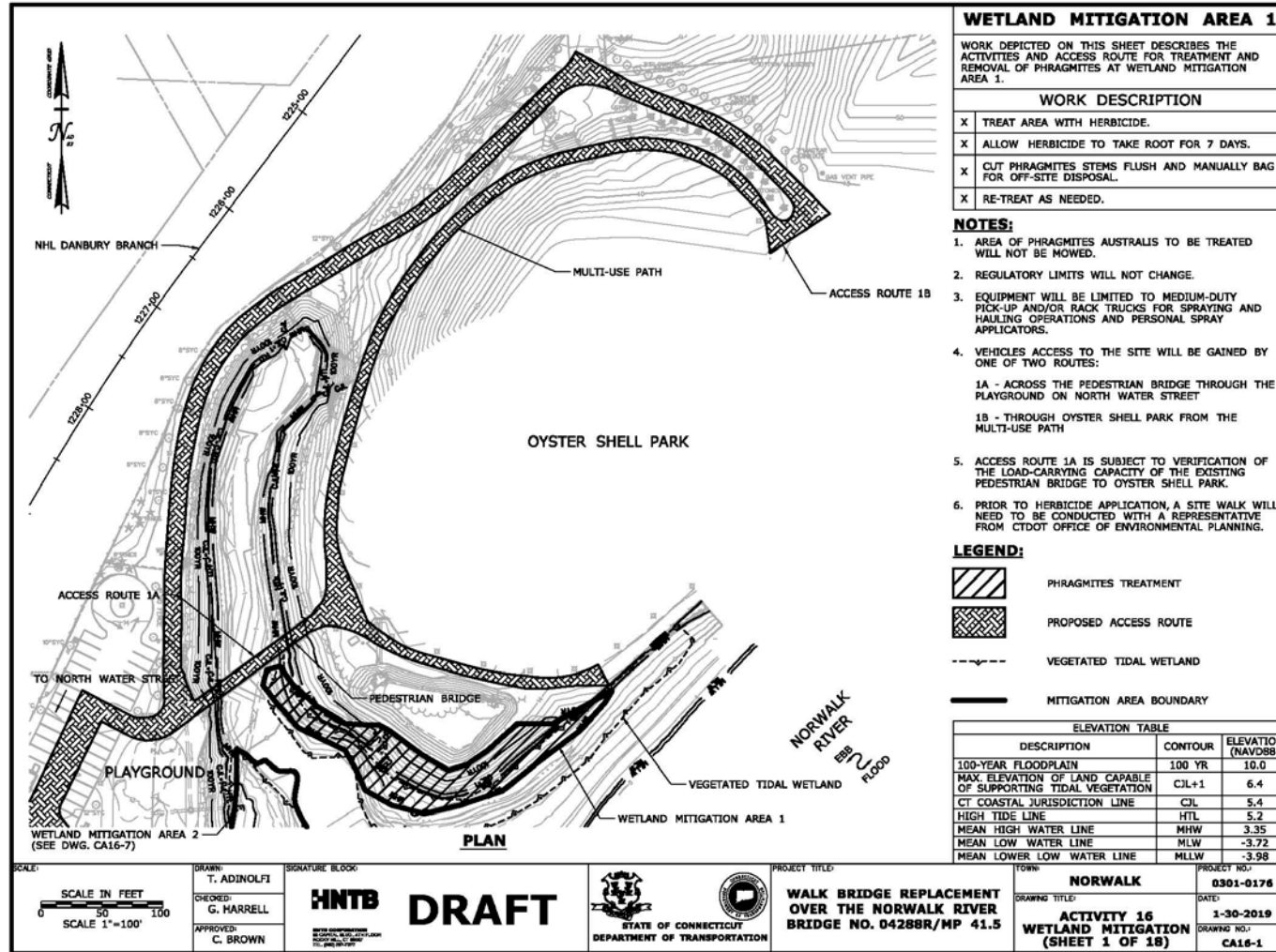
- CTDEEP General Permit for the Discharge of Groundwater Remediation Wastewater
 - Applies to all similar discharges in the State
 - Screening – Initial Sampling
 - DOT Performance Specification -> Treatment system must meet effluent limitations
 - Effluent Limitations
 - Monitoring Frequency
 - < 5,000 gallons per day – Quarterly
 - > 5,000 gallons per day - Monthly



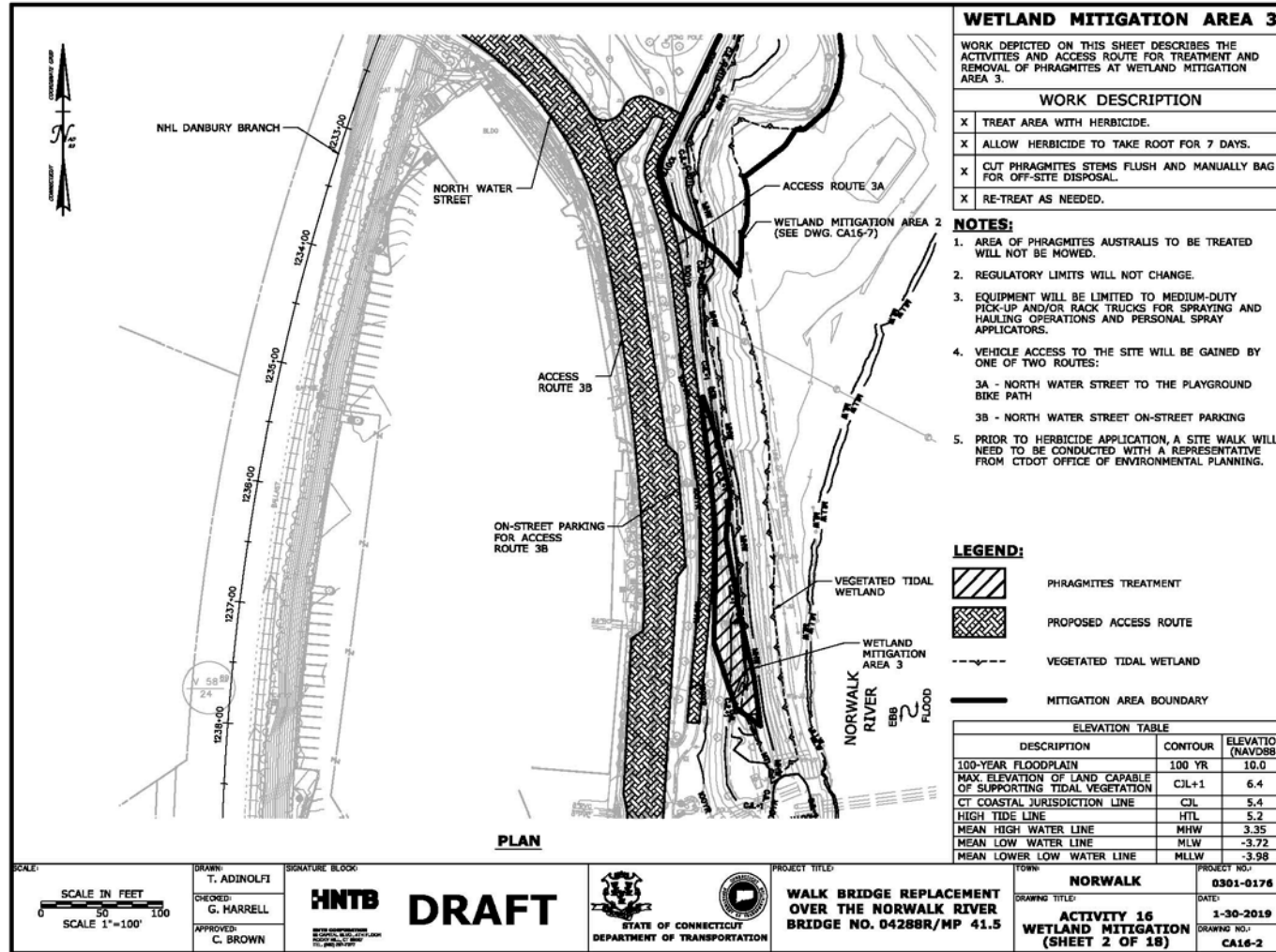
Wetland Mitigation Locations



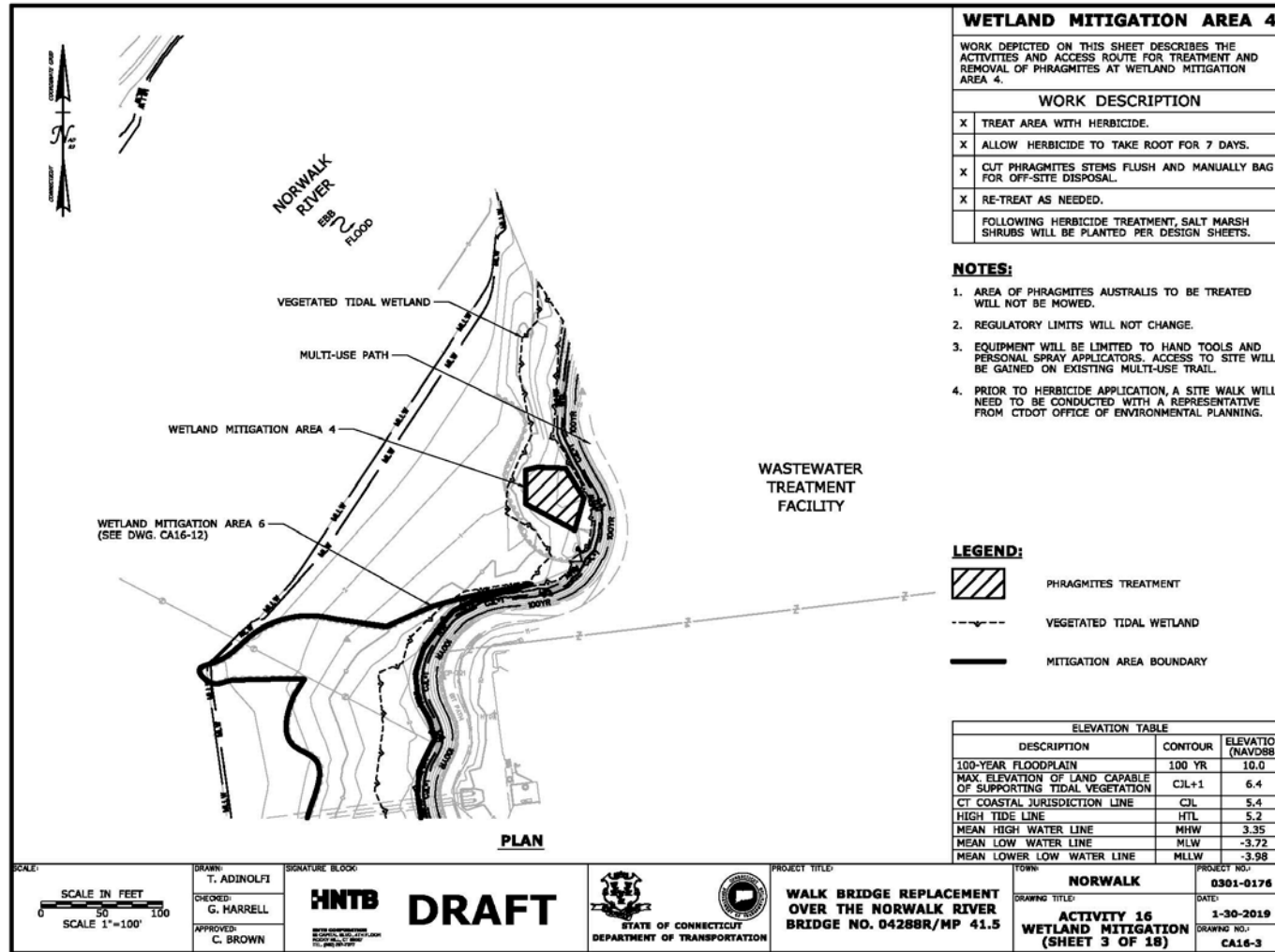
Wetland Mitigation – Area 1



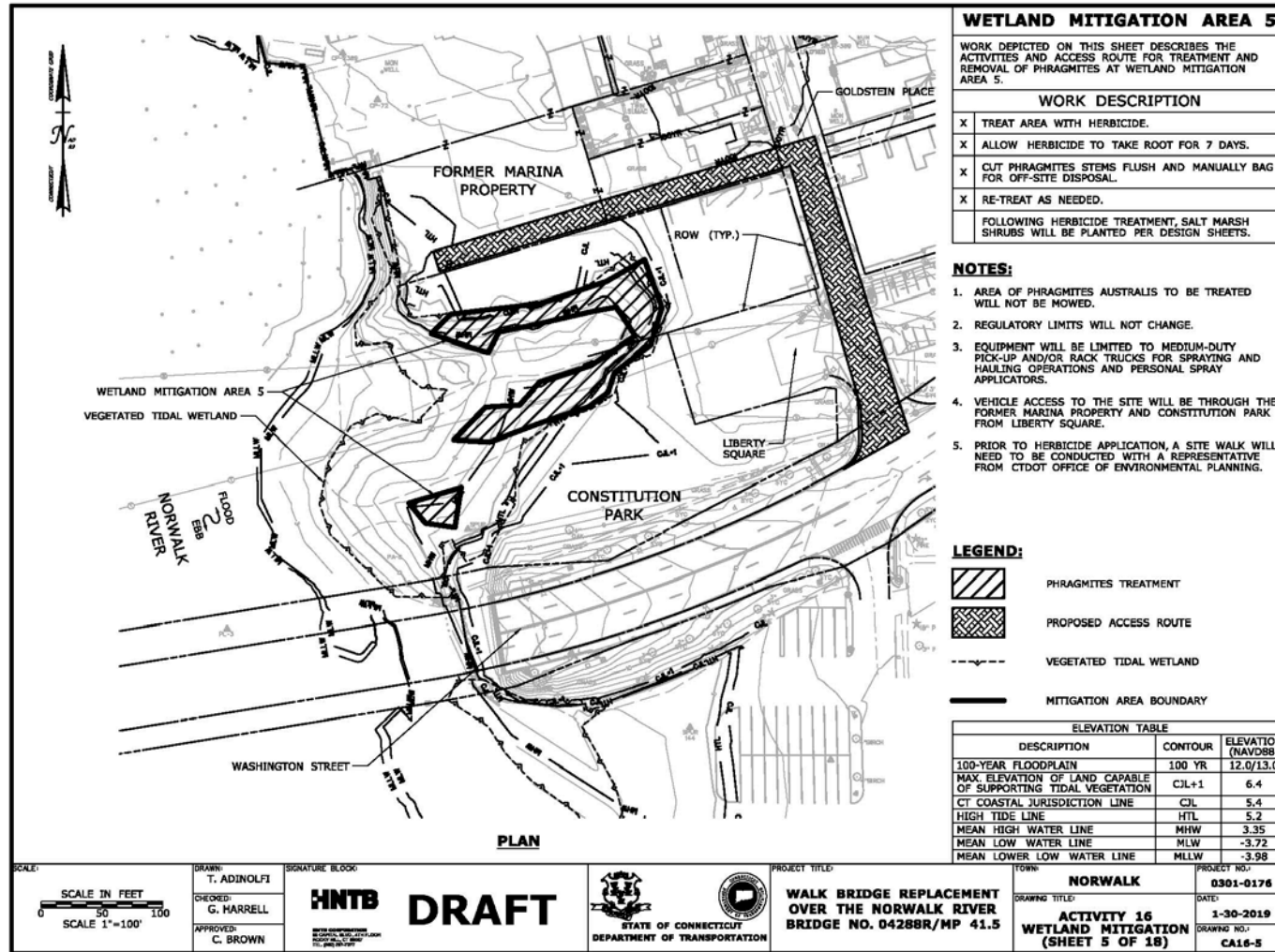
Wetland Mitigation – Area 3



Wetland Mitigation – Area 4



Wetland Mitigation – Area 5

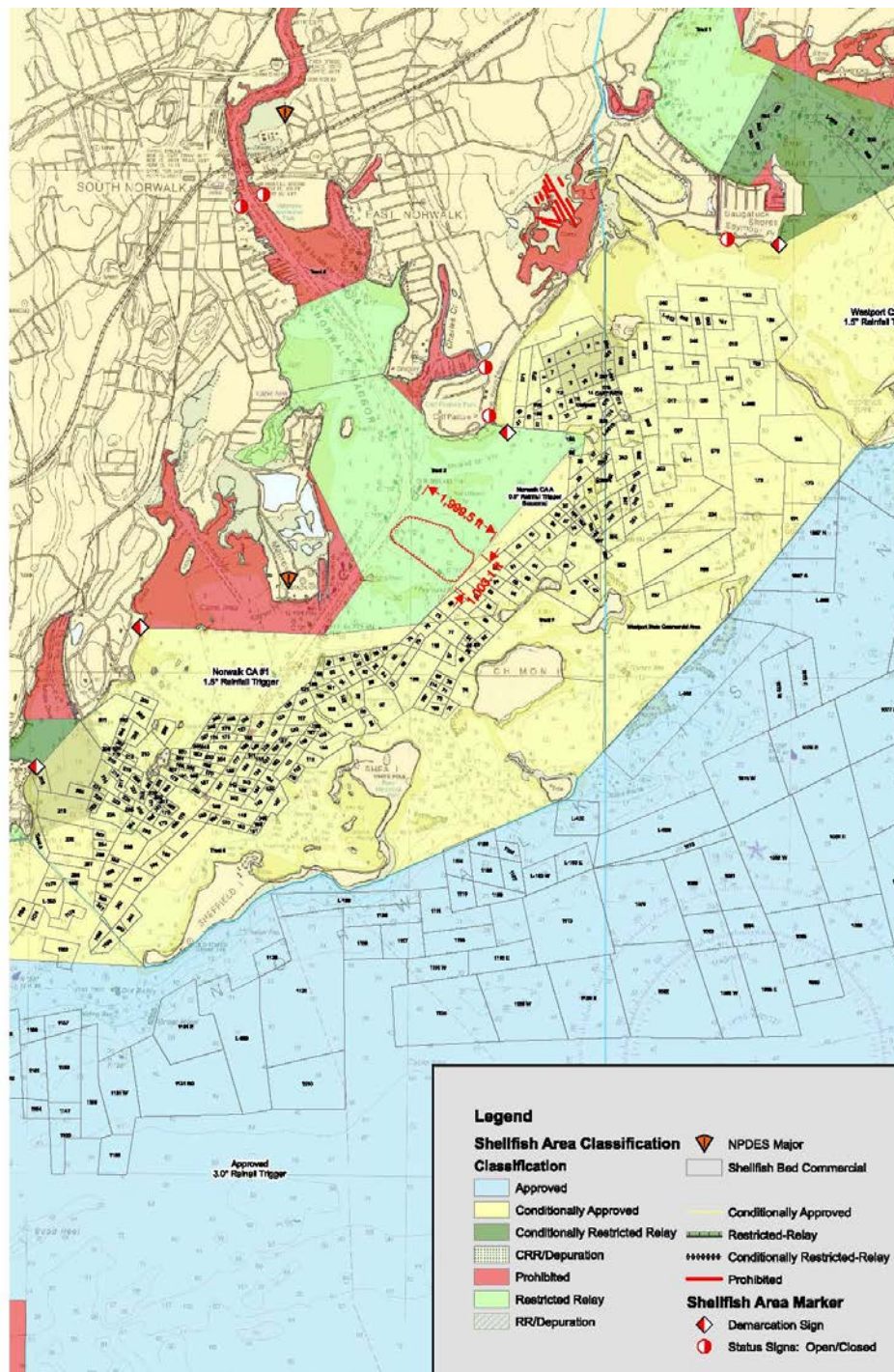


Wetland Mitigation Protective Measures

- Turbidity curtains around sites requiring grading or excavation
- Turbidity Monitoring
- Work only above tide cycle
- All temporary construction access restored to pre-construction conditions



Preliminary Barge Mooring



www.walkbridgect.com



Next Steps

- Submit Permit Plates in groups to Commission – next group February 15th
- Commission Meetings – to discuss construction methodologies, activities, and protective measures and other topics
- Full understanding of construction activities and mitigation measures
- Permit Filing – Spring 2019





Questions & Comments

