

Walk Bridge Project

Norwalk Shellfish Commission

Permit Pre-application Coordination

June 6, 2019



www.walkbridgect.com



Meeting Agenda

1. Introductions & Meeting Purpose
2. Project Overview and Update
3. Turbidity Monitoring
 1. Allowable NTUs and/or % over turbidity background
 2. Written post-turbidity exceedance investigation and action plans
 3. Discussion of initial/pre-construction sentinel stations data
 4. Telemetry and/or data reporting format and timing from sentinel stations
4. Final dredging spoils haul-out locations
5. Work barge stationing
6. Possible Eversource river crossing alignments
7. Low salt marsh remediation plans
8. Next steps and questions





Project Update

- Advancing project design
- Advancing preparation of permit applications including plates, impact quantities, narratives and mitigation
- Ongoing coordination with U.S. Army Corps of Engineers, U.S. Coast Guard, CT DEEP and National Marine Fisheries
- Ongoing coordination with Norwalk Shellfish Commission and Harbor Management Commission
- Ongoing coordination with City

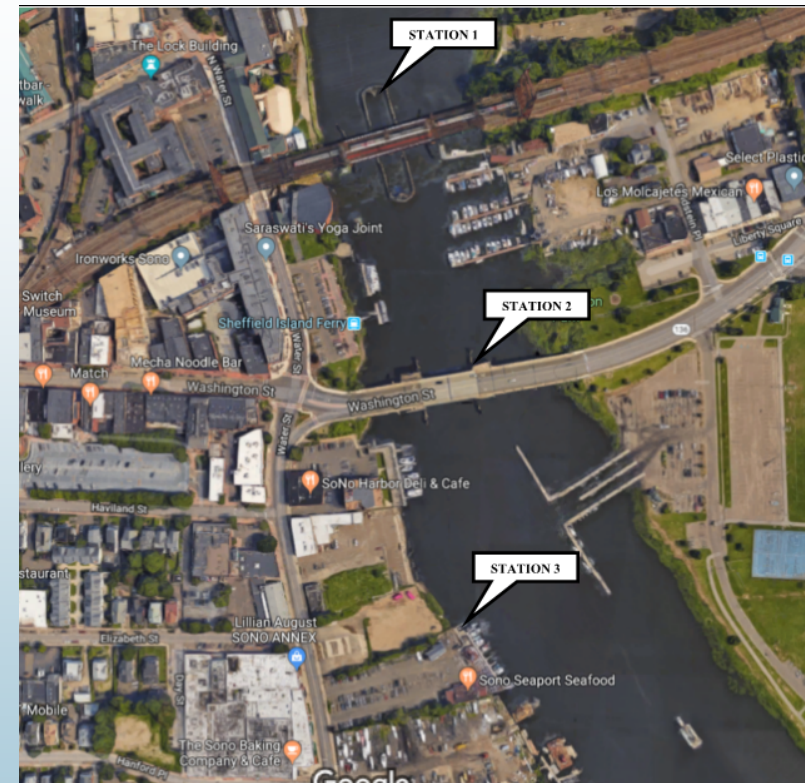


Water Quality Monitoring Program

- Pre-Construction Baseline monitoring
 - Monitoring stations were operational April 6th
 - Woods Hole Group
 - ~ 3 locations in vicinity of Walk Bridge
 - Monitoring Parameters (Turbidity, Dissolved Oxygen, Conductivity, pH)
 - Camera monitoring on Stroffolino Bridge

Station	Min (NTU)	Max (NTU)
1	0.4	46.6
2	-10.2	42.7
3	-5.6	42.7

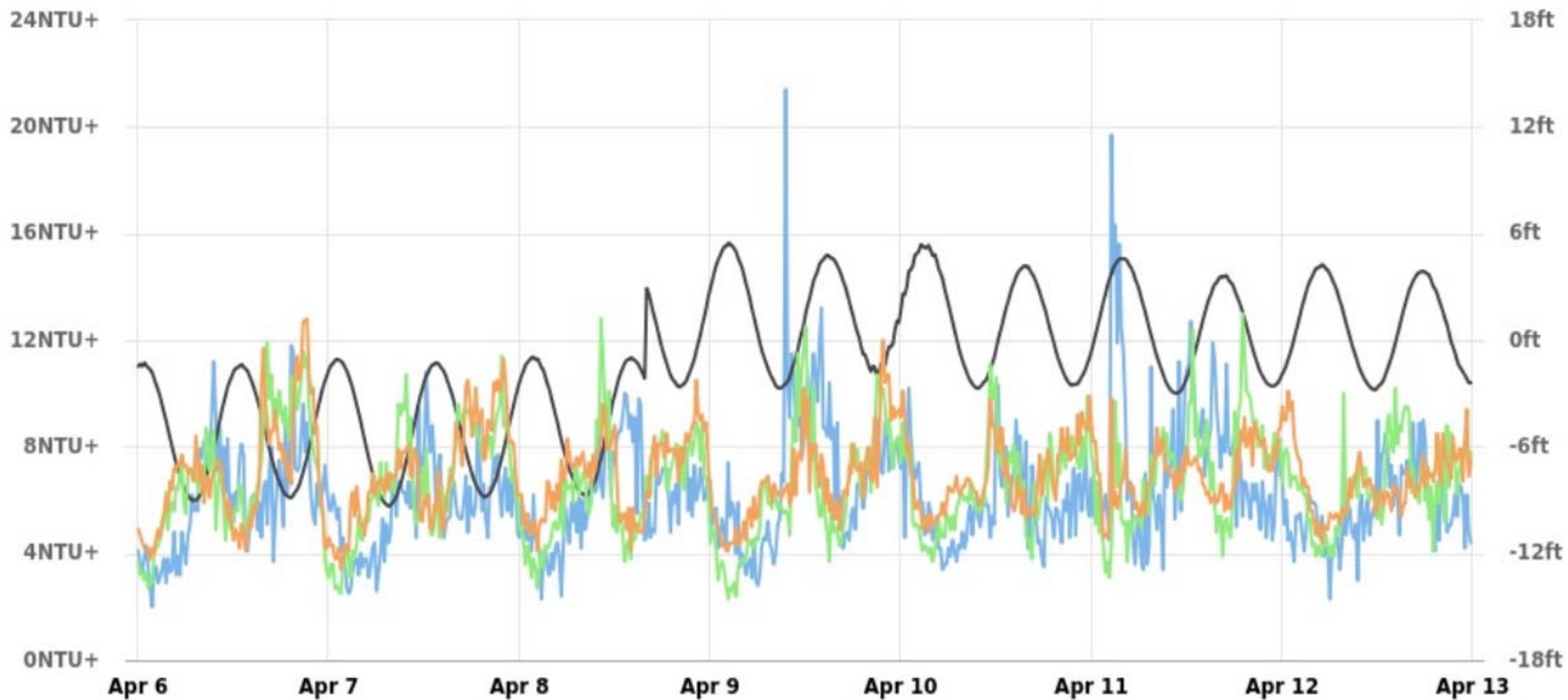
April 6, 2019 – May 3, 2019



www.walkbridgect.com



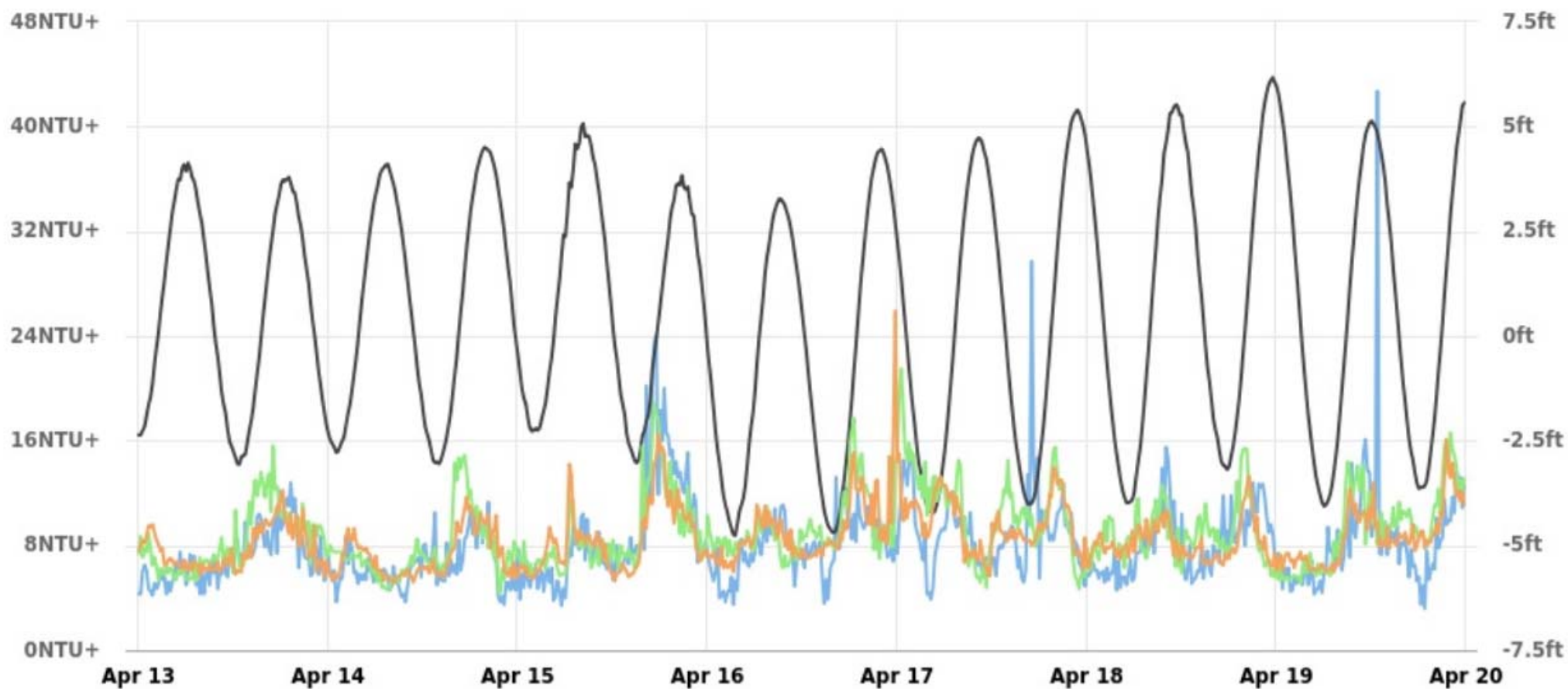
Selected Parameters



Station 3 - Marine Police Dock: Turbidity+ (NTU+)
Station 2 - Stroffolino Bridge: Turbidity+ (NTU+)

Station 2 - Stroffolino Bridge: Level - NAVD88 (ft)
Station 1 - Walk Bridge North: Turbidity+ (NTU+)

Selected Parameters



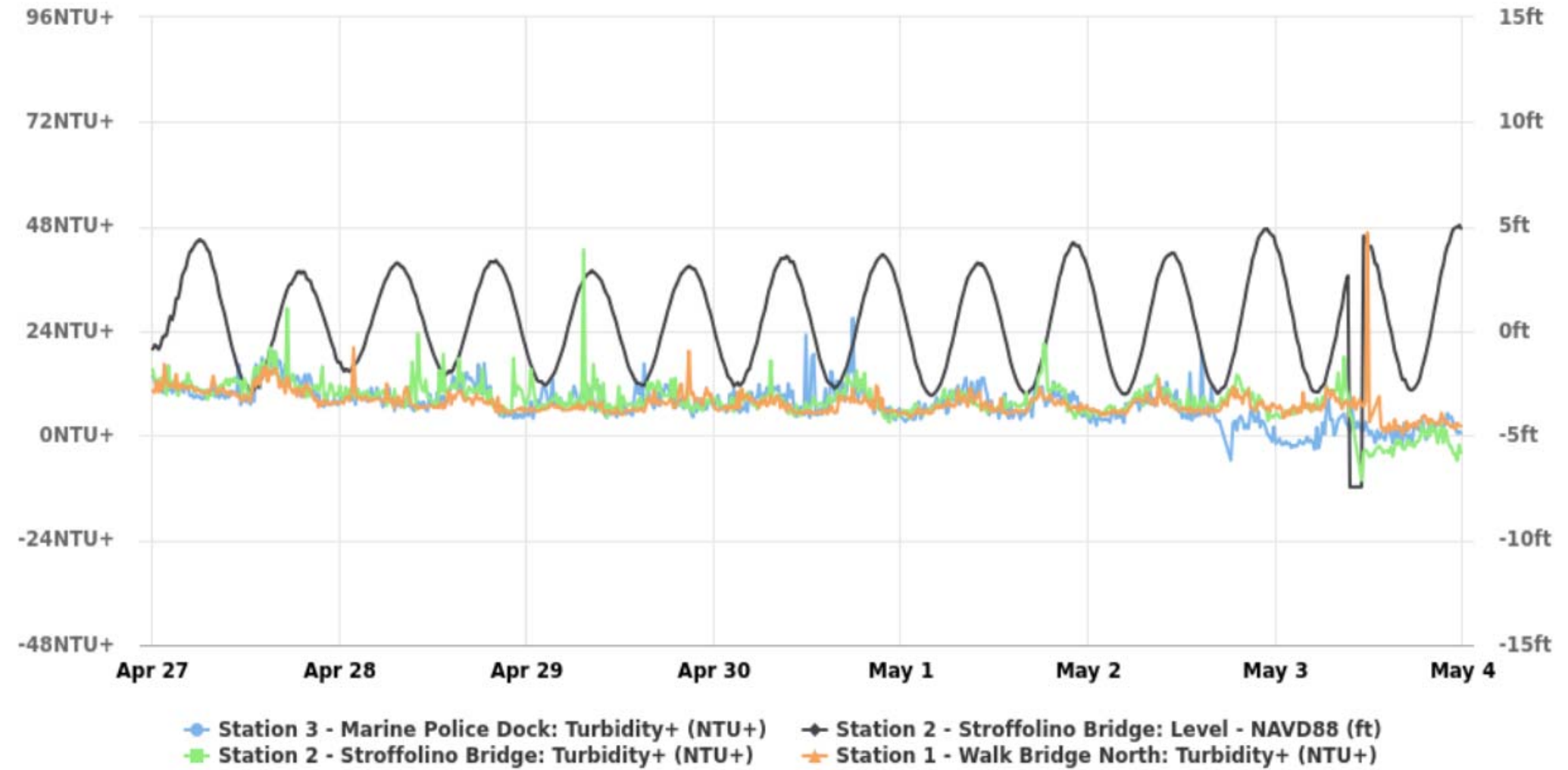
Station 3 - Marine Police Dock: Turbidity+ (NTU+)

Station 2 - Stroffolino Bridge: Turbidity+ (NTU+)

Station 2 - Stroffolino Bridge: Level - NAV88 (ft)

Station 1 - Walk Bridge North: Turbidity+ (NTU+)

Selected Parameters



Water Quality Monitoring Program

- Construction Monitoring
 - Upstream Locations (North & South of Bridge) to serve as Background
 - Two Mobile Devices mounted to a buoy - In the vicinity of the work activity
- Contract Documents
 - Section 1.10 of Form 817
 - Water Quality Monitoring Special Provision
 - Permit from ACOE/DEEP
- Construction Monitoring
 - Consultant Inspection Team
 - Real time monitoring



Water Quality Monitoring Program

- Action Levels
 - Five (5) NTUs when background turbidity is 0 – 15 NTUs
 - 35% increase when background turbidity is greater than 15 NTUs
- Corrective Actions
 - Inspect
 - Identify Source
 - Adjust Construction Activities
 - Document Adjustment
 - Report during weekly construction meetings
- Recordkeeping & Reporting
 - Monthly report of Readings and Corrective Actions Undertaken
 - Instantaneous Notice of a Fish kill

Background (NTU)	Example Action Level (NTU)
10	15
15	20
20	27
50	68
100	135



Sediment Haul-out Locations



www.walkbridgect.com



Sediment Haul-out Locations



www.walkbridgect.com



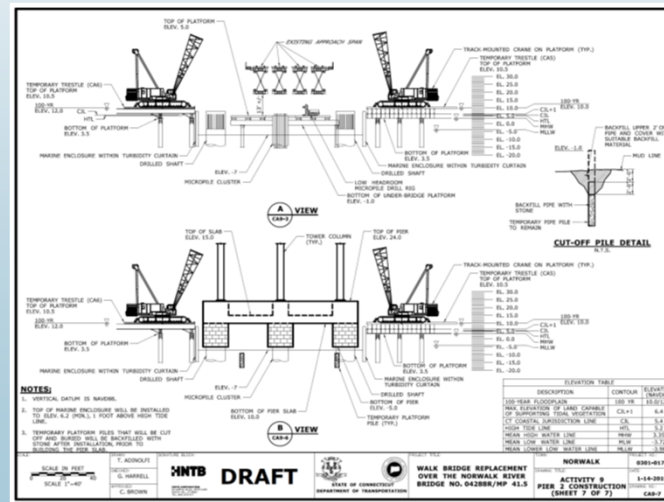
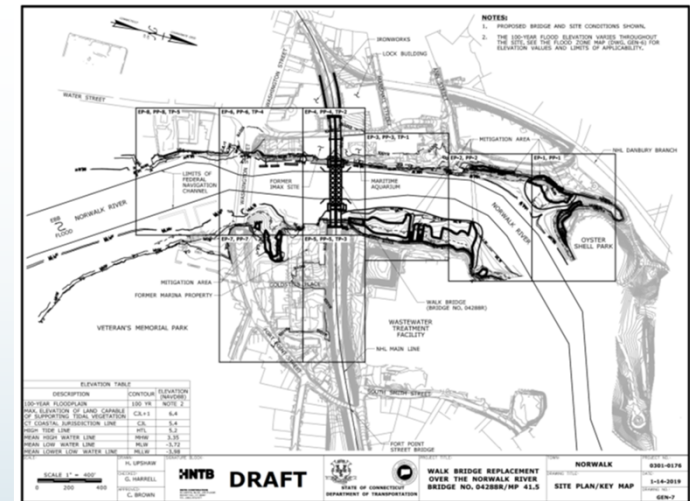
Sediment Dewatering Program

- CTDEEP General Permit for the Discharge of Groundwater Remediation Wastewater
 - Applies to all similar discharges in the State
 - Screening – Initial Sampling
 - DOT Performance Specification -> Treatment system must meet effluent limitations
 - Effluent Limitations
 - Monitoring Frequency
 - < 5,000 gallons per day – Quarterly
 - > 5,000 gallons per day - Monthly



Permit Plates

- Overview Plates
 - Existing & Proposed Conditions
 - Temporary Conditions
 - Tidal Wetland Mitigation
- Construction Activity Plates
 - Representation of construction activity within resource areas
 - Step by step details for 18 Major Activities
 - Plan views
 - Elevation/Section Views



Construction Activity Overview



NUMBER	CONSTRUCTION ACTIVITY
1	IMAX REMOVAL
2	DUCT BANK INSTALLATION
3	VESSEL DOCK RELOCATION
4	MARINE STAGING YARD
5	NORTHWEST TRESTLE
6	SOUTHWEST TRESTLE
7	NORTHEAST TRESTLE
8	SOUTHEAST TRESTLE
9	PIER 2
10	PIER 3
11	SUBMARINE CABLE INSTALLATION
12	SUBMARINE CABLE REMOVAL
13	SWING SPAN REMOVAL
14	EXISTING PIER REMOVAL
15	FENDER INSTALLATION
16	WETLAND MITIGATION
17	DREDGING
18	LIFT SPAN INSTALLATION

www.walkbridgect.com



Eversource Alignment Opportunities

- Current Alignment
- North of Stroffolino Bridge
- MNR duct bank overview



Stage 0



Stage 1



Stage 1 - - CAC



Stage 1 - - CAC



Stage 1 - - CAC

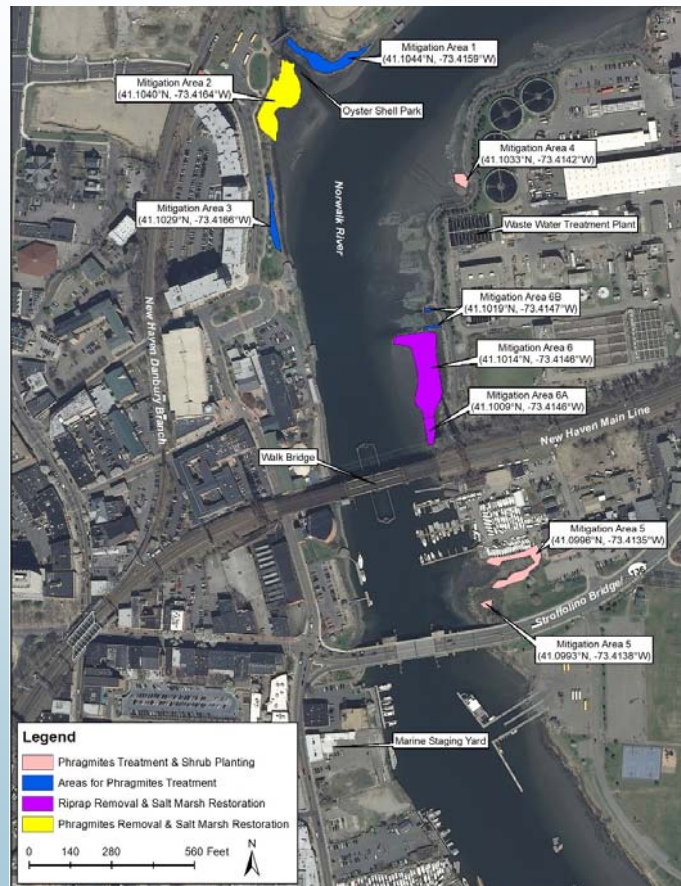


Summary of In-water Protective Measures

- Turbidity Curtains
- Turbidity Monitoring
- Time of Year Restrictions
 - Dredging will occur between Dec. 1 – Jan. 31
 - No unconfined in-water silt producing activities from Feb. 1 – Sept. 30
- Use of soft starts at the beginning of each shift from Mar. 15 to Oct. 31
- Maintain one navigation channel, except for limited closures
- All temporary construction access restored to pre-construction conditions
- Bubble curtains eliminated due to soil conditions



Wetland Mitigation Sites



- Phragmites Treatment and Shrub Planting
- Phragmites Treatment
- Intertidal Habitat/Tidal Marsh Remediation
- *Spartina alterniflora* Marsh Restoration

www.walkbridgect.com



Wetland Mitigation Site #2



www.walkbridgect.com



Wetland Mitigation Site #6



www.walkbridgect.com



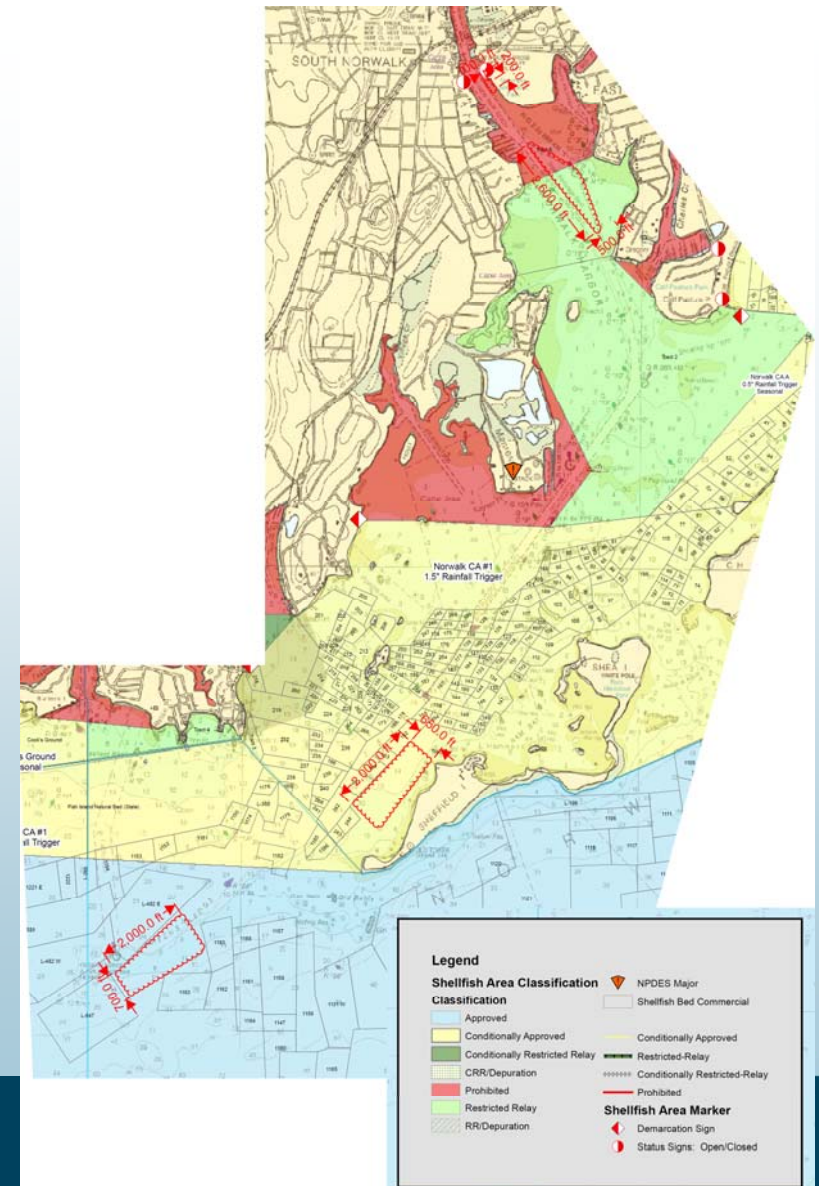
Wetland Mitigation Protective Measures

- Turbidity curtains around sites requiring grading or excavation
- Turbidity Monitoring
- Work only above tide cycle
- All temporary construction access restored to pre-construction conditions



Barge Mooring Locations

- “MNO”
- South Anchorage Basin
- Sheffield Island Bay
- Green Ledge Lighthouse





Next Steps, Questions & Comments



www.walkbridgect.com

